

MAPA ASPHALT NEWS

Missouri Asphalt Pavement Association

Fall 2024





WIRTGEN
GROUP

MURPHY
TRACTOR & EQUIPMENT CO.

murphytractor.com



WIRTGEN



VÖGELE



HAMM



KLEEMANN



Preserving Pavements with
Innovative Solutions since 1932

Asphalt Emulsions
& Cutbacks

Micro Surfacing
Slurry Seal

Chip Seal

Asphalt Underseal

High-performance
Fog Seals

Non-Woven
Geotextile

Crack Sealants

High-performance
Cold patch



314-219-7305 | www.MissouriPetroleum.com



DISCOVERING *INNOVATIVE SOLUTIONS* – *TOGETHER*

**ASPHALT
MODIFIERS,
ADDITIVES &
COATINGS**



trcc.com

Hot Oil on Time



Coastal Energy Corporation
Paving the way since 1979

1 Coastal Drive
Willow Springs, MO 65793
417-469-2777
www.coastal-fmc.com

MAPA ASPHALT NEWS

The Asphalt News is produced quarterly and distributed to association members and others interested in Missouri's asphalt industry.

Konn Wilson
President

Andy Ernst
Vice President

Tyson Collins
Secretary-Treasurer

Cecilia Cain

Casey Castrop

Frank Champion

Tyson Collins

Steve Jackson, P.E.

Brian Johanning

Josh Kincaid

Andy LaPlante

Matt Lindsay

Bryan Jones

Nick Stone

David Wilkins

Dale Williams
Executive Director
Mobile: (573) 690-9676
Email: dalewilliams@moasphalt.org

Tammy Cavender
Office Manager
Office: (573) 635-6071
Email: tammy@moasphalt.org

Rick Biermann
Director of Bus. Development - St. Louis
Mobile: (314) 348-3785
Email: rick@moasphalt.org

MAPA Contact Information
1221 Jefferson Street
Jefferson City, MO 65110
Phone: (573) 635-6071
Fax: (573) 635-6134

4 The Way I See It

The recent election of Mike Kehoe as Governor is a pivotal victory for Missouri's infrastructure.

5 MAPA's 35th Annual Conference

Check out the agenda for this year's conference and register online today.

6 Annual Golf Outing Recap

The MAPA-Research and Education Fund (REF) had a tremendous turnout at its annual golf outing.

7 Woman of Asphalt

Build My Future events and upcoming mentorship programs help educate others about the use and importance of asphalt.

7 Save the Dates for Upcoming Events

Mark your calendar for Black to Basics Spring training in February and the Clay Bird Shoot in April.

8 Annual Joint Meeting/Tour Recap

The annual collaboration of MAPA and AAPA provides a unique opportunity for members of both organizations to share insights and explore advancements in asphalt technology.

12 Roundtable Discussion & Superior Bowen Plant Tour

A large group of owners, consultants, producers, contractors, and city and county representatives met on October 23 to discuss opportunities to improve the design, bid, production, placement, and inspection of asphalt pavements.

FOLLOW US ON SOCIAL MEDIA



@MoAsphalt



moasphalt



facebook.com/MoAsphalt



moasphalt1

The Way I See It Celebrating a Win for Missouri Infrastructure: Mike Kehoe's Election and the Road Ahead

The recent election of Mike Kehoe as Governor is a pivotal victory for Missouri's infrastructure and a testament to the power of dedicated advocacy and engagement. Over the years, our industry has seen incredible progress in securing transportation funding and prioritizing infrastructure, thanks in large part to the support of leaders like Kehoe. His steadfast commitment to our roads and bridges will have a lasting impact on our state, and with his leadership, we are hopeful for a future where transportation needs are met with sustained funding and strategic planning.

Kehoe's background speaks volumes. From his service on the Missouri Highway Commission to his tenure as Lt. Governor, he has championed initiatives like SB262, which increased the motor fuel tax and secured vital funding for transportation. While other candidates promised to repeal these gains, Kehoe recognized the essential role these funds play in enhancing Missouri's roads and economy, a vision that aligns closely with our industry's needs. His election ensures that our state's infrastructure will remain a priority, paving the way for projects that will benefit not only our industry but the traveling public and the state's economy.

This progress wasn't achieved by accident. It took years of grassroots efforts and the strategic support of leaders like you. I want to extend my deepest thanks to all our members for taking the time to educate your employees, family, and friends on the importance of this election. From voting in the August Primary to showing up at the polls in November, your dedication was instrumental in making this victory a reality. Together, we've demonstrated that when we work as one, our industry's voice is powerful and effective.

As we move forward, let's take inspiration from Governor Kehoe's message of "Why Stop Now?" with transportation funding and project support on the horizon, there is still much work to be done. Let's continue our efforts with the same drive and unity that led us to this success. Thank you for your commitment, your grassroots support, and your role in securing a brighter future for Missouri's infrastructure.



Executive Director
Dale Williams



www.rolandmachinery.com



JOIN THE ROLAND TEAM

Missouri locations

Bridgeton, MO
4670 Crossroads Industrial Dr
Bridgeton, MO 63044
Phone: 314-291-1330

Cape Girardeau, MO
3364 Percy Drive
Cape Girardeau, MO 63701
Phone: 573-334-5252

Columbia, MO
4110 I-70 Drive South East
Columbia, MO 65201
Phone: 573-814-0083

Palmyra, MO
701 Industrial Drive
Palmyra, MO 63461
Phone: 573-769-2056



Annual MAPA Conference Join Us for MAPA's 35th Conference

Come and hear from experts that cover relevant industry topics, have an opportunity to visit exhibitors, enjoy the awards ceremony, and network with hundreds of individuals from the asphalt industry.

Registration is currently open! To learn more about the conference and register online visit:


www.moasphalt.org/events



MAPA
MISSOURI ASPHALT PAVEMENT ASSOCIATION

Join us for our
35th
ANNIVERSARY
Conference

January 6-8, 2025
Holiday Inn Executive
Center in Columbia, MO



KEYNOTE SPEAKER
COL. MARK TILLMAN

Hear how he protected
the President on Sept. 11, 2001.




MAPA
MISSOURI ASPHALT PAVEMENT ASSOCIATION

2025 ANNUAL CONFERENCE

AGENDA

DAY 1	MONDAY JANUARY 6	
10:00 A.M. Vendor Set Up Begins Expo	3:00 PM TO 6:00 PM Registration Desk Open Lobby Area	7:30 PM TO 10:00 PM Casino Night Windsor III
DAY 2	TUESDAY JANUARY 7	
7:00 AM TO 8:30 AM Buffet Breakfast Expo	11:00 AM TO 11:30 AM Panel Discussion: MAPA 35 Years - Brady Meldrum, Norris Asphalt; Phil Hutchens, former owner of Hutchens Construction; and Larry West, N.B West Contracting Windsor III	2:30 PM TO 3:00 PM Lt. Gov. Mike Kehoe (invited) Windsor III
8:00 AM TO 9:00 AM Annual Business Meeting - Members Only Windsor I	3:00 PM TO 3:30 PM Break Expo	3:30 PM TO 4:30 PM The Economic Outlook for the Construction Materials Sector - George Reddin, FMI Capital Advisors Windsor III
9:15 AM TO 9:30 AM Welcome Windsor III	11:30 AM TO 12:00 PM Women of Asphalt Windsor III	5:00 PM TO 6:30 PM Reception & Equipment Exhibit Expo
9:30 AM TO 10:30 AM Keynote Speaker: Col. (retired) Mark Tillman, pilot and commander of Air Force One on Sept. 11, 2001 Windsor III	12:00 PM TO 2:00 PM Equipment Exhibit, Lunch, Paving and Safety Awards Expo	6:30 PM TO 10:30 PM Dinner, Equipment Exhibit, MAPA-REF Raffle, MAPA-PAC Auction, music and networking Expo
10:30 AM TO 11:00 AM NAPA Update - Brady Meldrum, Norris Asphalt Windsor III	2:00 PM TO 2:30 PM MoDOT Update - MoDOT Director Invited Windsor III	



MAPA
MISSOURI ASPHALT PAVEMENT ASSOCIATION

2025 ANNUAL CONFERENCE

AGENDA

DAY 3	WEDNESDAY JANUARY 8	
7:00 AM TO 8:30 AM Buffet Breakfast Expo	11:00 AM TO 11:15 AM MAPA Committee Updates Windsor III	
8:30 AM TO 9:00 AM Situational Awareness for the Asphalt Pavement Industry: An Introduction to the APA - Dr. R. Buzz Powell, Asphalt Pavement Alliance Windsor III	11:15 AM TO 11:45 AM MoDOT Field Office Update - Jacob Graessle, MoDOT Field Office Windsor III	
9:00 AM TO 9:30 AM What in the HIMA is Going on in Utah? An Exploration of Highly Modified Asphalt Pavements - Dr. R. Buzz Powell, Asphalt Pavement Alliance Windsor III	11:45 AM TO 12:00 PM Wrap Up and Prizes Windsor III	
9:30 AM TO 10:00 AM External Civil Rights - Missy Stuedle and Zainab Jasim, MoDOT Windsor III		
10:00 AM TO 10:30 AM Break Lobby Area		
10:30 AM TO 11:00 AM MU Update - Bill Buttler, Barton Flexible Pavement Chair		
Missouri S&T Update - Magdy Abdeirahman, MAPA Endowed Professor Windsor III		

Save the Date

2026 Annual Conference
January 5-7, 2026
Columbia, MO

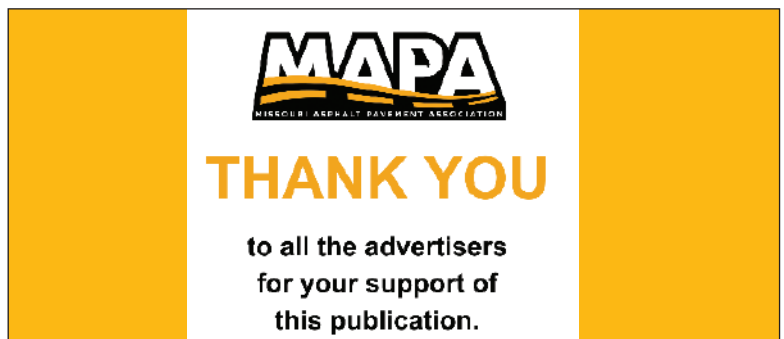
Asphalt. MISSOURI RIDES ON US



MISSISSIPPI[®]
LIME

Discovering what's possible with calcium

www.mlc.com (800-437-5463)



MAPA
MISSOURI ASPHALT PAVEMENT ASSOCIATION

THANK YOU

to all the advertisers
for your support of
this publication.



“It took me 17 years to get 3,000 hits in baseball. I did it in one afternoon on the golf course.” – Babe Ruth

MAPA-Research and Education Fund Annual Golf Outing Recap

The MAPA-Research and Education Fund (REF) had a tremendous turnout at its annual golf outing at Tanglewood Golf Course in Fulton, MO. Over 120 golfers spent the gorgeous day networking, showing their skills, and supporting a great cause...the scholarship program for the infrastructure industry. Congratulations to the winners of the 25th annual golf outing!

Tent/Hole Sponsors

- CWMF Corp
- MayeCreate Design
- Medium Rare Promotions
- Purple Wave Auction
- Stansteel/Hotmix Parts
- Tarmac International
- W.R. Meadows, Inc.

Hole Sponsors

- Coastal Energy Corporation
- Con Agg Companies
- Dynapac North America
- E. Meier Contracting
- FORTA Corp
- Herzog Contracting Corp
- Ideker, Inc.
- Marathon Petroleum
- Olsson
- Phillips 66
- Simpson Materials

Championship Flight



1st Place

Tom Bindeutel, Andy Cook, and Drew Cook (*Kevin Geise not pictured*)



2nd Place

Dan Steuber, Wyatt Pettus, Tom Simpson, and Jared Kraus

A Flight

1st Place

Austin Williams, Cecilia Cain, Steve Peterson, and Derrick Schatte

2nd Place

Bart Holmes, Konn Wilson, Nick Stone, and Jason Giovando

B Flight

1st Place

Guy Maher, Russell O’Laughlin, John Kanney

2nd Place

Jess Hess, Colin McGee, Jim Seals, and Craig Ferris



MAPA-REF greatly appreciates the companies that sponsored the golf outing and for those that continue to support the scholarship program!





Women of Asphalt Build My Future Events and Upcoming Mentorship Program



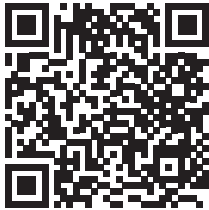
Members of the Women of Asphalt – Missouri Branch have been busy the last few months attending Build My Future events across the state. Build My Future is an opportunity for students to get a hands on experience in a wide variety of career opportunities in the construction industry. The Missouri Women of Asphalt educated thousands of junior and senior high school students about the use and importance of asphalt.

Registration Now Open – Women of Asphalt 2025 Mentorship Program!

We are thrilled to announce that registration is now open for the Women of Asphalt's 2025 Mentorship Program! This program has had a significant impact on the industry, providing an incredible opportunity to create lasting networks and engage in insightful conversations that can help advance your career.

The deadline to apply is December 6, 2024. Afterward, the mentor-mentee matching process will begin and be completed by mid-January, with the program officially kicking off in February 2025.

For any questions, feel free to contact us at info@womenofasphalt.org. We look forward to your involvement in this impactful program!




Register Here

Save the Dates MAPA Upcoming Events


Watch www.moasphalt.org/events for updates on these events.

As part of the Spring Training, MAPA will feature a **breakout session titled "Benefits of Asphalt Design & Construction"** specifically focused on the needs of **cities, counties, and consultants**. Your input is invaluable to us! To ensure this session delivers the most relevant and practical information, we would love to hear your ideas and suggestions for topics you would like to see covered. Whether it's technical design considerations, case studies, sustainability initiatives, or innovative construction practices, your feedback will help us tailor the training to provide the best value for your teams and projects. Send your feedback to dalewilliams@moasphalt.org.



BLACK TO BASICS
SPRING TRAINING

February 12 & 13, 2025
Holiday Inn Executive Center
Columbia, MO



6th Annual MAPA Emerging Leaders

Clay Bird Shoot

Save the Date
April 23, 2025
11:00
Prairie Grove Shotgun Sports
1420 County Road 276 | Columbia, MO 65202



MAPA
EMERGING LEADERS



MAPA/AAPA Annual Joint Meeting/Tour Recap

Last month, the National Center for Asphalt Technology (NCAT) at Auburn University was the site for the annual joint meeting between the Missouri Asphalt Pavement Association (MAPA) and the Arkansas Asphalt Pavement Association's (AAPA) young and emerging leaders. This annual collaboration provided a unique opportunity for members of both organizations to share insights and explore advancements in asphalt technology. The visit included a tour of the NCAT Test Track and the asphalt laboratory, showcasing the center's pivotal role in research and innovation.



Established in 2000, NCAT's mission is to enhance asphalt pavement performance through comprehensive research, education, and technology transfer. The center plays a vital role in addressing industry challenges, focusing on sustainability, material selection, and the long-term performance of asphalt pavements.

The highlight of the visit was the NCAT Test Track, a state-of-the-art facility designed for evaluating asphalt mixtures under real-world conditions. Spanning approximately 1.7 miles, the track has 46 individual test sections that serve as a testing ground for various research projects. A key focus during the visit was the Arkansas Department of Transportation (ARDOT) test section, which is utilizing Ground Tire Rubber (GTR) in its asphalt mixtures. This innovative approach aims to enhance the performance and sustainability of pavements by incorporating recycled materials. Attendees learned about the unique properties of GTR, which can improve resistance to cracking and rutting, making it a valuable addition to asphalt mixtures in the region. The ongoing evaluations at this test section will provide crucial data for optimizing the use of GTR in future road construction projects.

During the joint meeting, attendees observed how the Test Track is used to assess new asphalt binder technologies and different mixture designs. Researchers at NCAT conduct accelerated loading tests that simulate the effects of traffic over time, with the test track receiving approximately 30 million Equivalent Single Axle Loads (ESALs) during a typical research cycle. This level of traffic exposure is equivalent to nearly 20 years of standard highway traffic, allowing researchers to gather invaluable data on pavement durability in a significantly compressed timeframe. This robust testing regimen enhances the reliability of findings and helps in developing more resilient asphalt mixtures.

Following the Test Track tour, attendees explored the asphalt laboratory, where rigorous testing procedures are carried out to evaluate the properties of asphalt materials. The lab is equipped with industry leading advanced technology for a variety of tests. Laboratory staff emphasized the importance of adhering to industry standards to ensure the reliability of test results. Their dedication to continuous improvement and innovation was evident throughout the discussions.

The joint meeting between the Missouri and Arkansas Asphalt Pavement Associations at the National Center for Asphalt Technology underscored the collaborative spirit of the asphalt industry. The combination of the NCAT Test Track and the asphalt laboratory offers a comprehensive approach to enhancing pavement performance. As the industry continues to evolve, partnerships like these are crucial for fostering advancements that promote durability, safety, and sustainability in road construction. The insights gained from this visit will undoubtedly benefit both associations as they work towards common goals in asphalt technology and paving practices.





LEADING ASPHALT TRADE SHOW AND CONFERENCE

- See the Latest Equipment
- Learn Best Practices and Techniques
- Improve your Jobsite and Business

March 25-27, 2025 | St. Louis, MO

Use **SAVE20** to Receive 20% Off your Admission to World of Asphalt

ADVERTISER'S INDEX

Bomag Fayat Group & CMW Equipment.....	16	Interstate Testing Services	12
Coastal Energy Corporation	2	Mississippi Lime	5
CMW Equipment	13	Missouri Petroleum.....	2
Ergon Asphalt & Emulsions, Inc.	15	Murphy Tractor & Equipment Co.	2
Delta Companies, Inc.	13	Premier Testing Laboratories, LLC	12
Fabick CAT	11	Roland Machinery Co.	4
Foley Equipment.....	11	TRCC.....	2
Hawthorn Bank.....	12	Vance Bros Inc.	10

PRESERVING PAVEMENTS

SINCE 1923

MICRO SURFACING SLURRY SEAL CHIP SEAL FOG SEALING CRACK SEALING

Emulsions Polymer-Modified Asphalts Cutbacks

Specializing in work for Cities, Counties and State DOT's

All Emulsified Asphalt based treatments installed for the preservation research at NCAT/MNROADS were completed by Vance Brothers, Inc. crews.



1923 - 2023

vancebrothers.com



SUPPORT YOU TRUST

Tackle any challenge with Fabick Cat.



LET'S DO THE WORK. 800.845.9188 | fabickcat.com

© 2022 Caterpillar. All Rights Reserved. CAT, CATERPILLAR, LET'S DO THE WORK, their respective logos, "Caterpillar Corporate Yellow", the "Power Edge" and Cat "Modern Hex" trade dress as well as corporate and product identity used herein, are trademarks of Caterpillar and may not be used without permission.

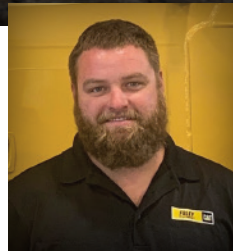


YOUR PAVING PARTNER

SALES • RENTAL • PARTS & SERVICE



Ryan Harman
RPHarman@FoleyEQ.com
Ph.: (785) 825-4661
Cell: (785) 303-0665



Tim Sirridge
TJSirridge@FoleyEQ.com
Ph.: (816) 753-5300
Cell: (816) 206-7275

Paving experts, Ryan Harman and Tim Sirridge, have experience in every aspect of the paving business including fleet management and maintenance, machine acquisition and life cycle management, work flows, resource allocation and profitable operations.

Give them a call for information and advice on the entire line of Cat® and Weiler paving machines.



FoleyEQ.com

© 2023 Caterpillar. All Rights Reserved. CAT, CATERPILLAR, LET'S DO THE WORK, their respective logos, "Caterpillar Corporate Yellow", the "Power Edge" and Cat "Modern Hex" trade dress as well as corporate and product identity used herein, are trademarks of Caterpillar and may not be used without permission. www.cat.com / www.caterpillar.com

Roundtable Discussion & Superior Bowen Plant Tour Discussing Opportunities for Improvement

MAPA partnered with Superior Bowen, Ideker, Inc., and the Kansas Asphalt Pavement Association to host a roundtable discussion in Kansas City at Superior Bowen's Manchester Plant. A large group of owners, consultants, producers, contractors, and city and county representatives met on October 23 to discuss opportunities to improve the design, bid, production, placement, and inspection of asphalt pavements. Experts from Superior Bowen and Ideker shared information and best practices and a tour was provided to attendees. This was an excellent way for industry and municipal representatives to get together to improve the successfulness of asphalt pavement projects.



Specializing in highway construction materials testing using cutting edge equipment and DOT certified technicians

Many other specialized testing capabilities and on site testing services.

- Asphalt Mixture Testing and Design
- Asphalt Binders
- Concrete Testing
- Aggregates
- On-Site Testing Services



Office Phone: 314-994-0641 | Fax: 314-994-0687
Email: alaplante@interstatetesting.com

For Equipment Financing, Operating Lines of Credit and the ability to take managing your accounts to the next level with our Mobile Banking app.



Look to the Commercial Loan Experts at:



1-877-442-9846



Member FDIC HawthornBank.com NASDAQ: HWBK



Office Phone: 573-406-1383
Fax: 573-406-1398
Email: infoptlabs@gmail.com
www.premiertestinglab.com

Asphalt Mixture

- Superpave Volumetric Mix Design
- Marshall Mix Design
- Stone Mastic Asphalt Design
- Recycle Materials (RAP, RAS) Analysis
- Ultra-Thin Bonded Wearing Course Design
- Hamburg Loaded Wheel Test
- Asphalt Pavement Analyzer
- Moisture Damage Susceptibility Testing
- Profilograph Services
- Field and Engineering Service

Asphalt Binder

- AASHTO M320 and MP19 PGB Verification and Classification Testing
- Asphalt Extraction Testing using Trichloroethylene
- Many other specialized testing capabilities



DELTA
Companies Inc.

A COLAS COMPANY

**BUILDING INFRASTRUCTURE
TO CONNECT YOUR COMMUNITY.**



CMW
Equipment

St. Louis, MO
800-283-1336
www.cmw-equip.com

Over 65 years of dependability supported by:



MAULDIN DISTRIBUTORS/PAVERS

**CARLSON
PAVERS, SCREEDS**

FALCON HOTBOXES



VOLVO ROLLERS



STEWART AMOS SWEEPERS

DURAPATCHER SPRAY PATCHERS

GORMAN RUPP PUMPS

CIMLINE CRACK SEALERS



BOMAG MILLS/ROLLERS/SOIL STABILIZERS



BOMAG/CEDARAPIDS PAVERS



SAKAI ROLLERS

SUPERIOR BROOMS

ABG PAVERS

BLAW KNOX ROAD WIDENERS

Sales * Rental * Service * Parts

MAPA MEMBERS

The contractor's skill, experience and equipment relates directly to the ultimate quality of your asphalt paving project. Producing top quality work is the hallmark of MAPA's members. Whether you're building a highway, street, parking lot or driveway, look to a MAPA member. We'll be happy to show you the way.

Producer

Capital
Christensen Construction/
Christensen Brothers
Delta Companies, Inc./Delta Asphalt, Inc./
Apex Paving Company
Emery Sapp and Sons, Inc.
Herzog Contracting Corporation
Ideker, Inc.
Magruder Paving, LLC
N.B. West Contracting Company, Inc.
New Frontier Materials
Norris Asphalt Paving
Pace Construction Company
Simpson Materials Company
Superior Bowen
Willard Asphalt

Non-Producer Paver

Accurate Asphalt Paving Co., Inc.
Advanced Asphalt Paving
& Concrete, LLC
Available Asphalt & Contracting, LLC
Diversified Contractors
E. Meier Contracting
Ford Asphalt Company
Hotshot Asphalt, LLC
Leritz Busy Bee Paving
L. Keeley Construction
Mainstreet Asphalt Maintenance, LLC
Pioneer Paving & Sealing
Seal-O-Matic Paving
Tramar Contracting, Inc.

Bituminous

Coastal Energy
Ergon Asphalt & Emulsions, Inc.
Flint Hills Resources
Heartland Asphalt Materials
Marathon Petroleum
Missouri Petroleum Products, Inc.
Peterson Oil Company
Phillips 66 Asphalt
Spirit Asphalt, Inc.

Aggregate

Ash Grove Aggregates, Inc.
Con Agg Companies
Martin Marietta

County & City

Boone County
City of Clayton
City of Saint Peters
City of Springfield Public Works
Cole County Public Works
Greene County Highway Department
Lincoln County Highway Department

Engineering/Consulting

Bartlett and West
Crossroad Pavement Consulting
Engineering Surveys & Services
Lochmueller Group
Olsson - Kansas City
PaveTech Consulting, Inc.
SCI Engineering
State Technical College of Missouri

Associate

All State Materials Group
Ammann America, Inc.
Antigo Construction, Inc.
Arch Transit, LLC
Arkema Road Science
Asphalt Materials, Inc.
Asphalt Plus
Astec Industries
Barker, Phillips, & Jackson Inc.
Berry Tractor & Equipment
Blacklidge Emulsions, Inc.
Bluegrass Testing Laboratory
BOMAG Americas
Buckley Powder
Buildex, Inc.
Central Power Systems & Services
CMW Equipment
Corrective Asphalt Materials, LLC
Crafco
CWMF Corporation
Dustrol, Inc.
EquipmentShare
FabickCAT
FleetWatcher, LLC
Foley Equipment
FORTA
Gilson Company, Inc.
GS Grinding Services, LLC
G.W. Van Keppel Co.
Hall Brothers, Inc.
HaulHub Technologies

MAPA MEMBERS Continued

Hi-Tech Asphalt Solutions, Inc.
Home Builder's Association of
Central Missouri
Ingevity
Innovative Roadway Solutions
Interstate Testing Services
Kraft Tank Corporation
Lockton Companies
MACC Contracting, Inc.
Martin Equipment of Illinois
Maxam Equipment
MayeCreate Design

McMahon Berger, P.C.
Mississippi Lime Co.
MOBA Corp.
Murphy Tractor & Equipment Co.
Ozark Laser & Shoring
Pavon Corporation
Petro Logistics, LLC
Premier Testing Labs
Purple Wave Auction
REGEN Fiber, LLC
Roland Machinery Co.
Stansteel Corporation

Surface Tech
Tarmac International, Inc.
Topcon Solutions
Ultrapave
Verde Resources, Inc.
Wallis Lubricants
Wright Asphalt Products Co.

YOUR RESOURCE FOR EVERY ROAD.

We are proud to be your go-to roadway resource. Let one of our specialized team members assist you on your next project, and find the answers you're looking for today.

 **Ergon Asphalt
& Emulsions, Inc.**

ergonasphalt.com



THANKS FOR ALL YOU DO

**WE KNOW THAT YOU WORK LONG, HARD
DAYS AND BOMAG PAVERS WILL BE
THERE WITH YOU FOR EVERY MILE.**

We at BOMAG appreciate your dedication to your job, the way you take pride in your craft, and the long hours you put in to building our roads and keeping our country moving forward.

We take pride in our work too. Designed and built in the USA, our BOMAG CR-series pavers can withstand the real-world rigors of the toughest jobsites you face. We understand your everyday challenges, and our dedicated dealers and staff are here to stand by you during every mile.

To learn more about our paving products, visit www.bomag.com, or contact your local authorized dealer.

CMW
Equipment
www.cmw-equip.com

12890 Penridge Drive • Bridgeton, MO 63044 • 800-283-1336

*Serving Eastern Missouri,
Central and Southern Illinois*

BOMAG
FAYAT GROUP

www.bomag.com/us-en