

MAPA ASPHALT NEWS

Missouri Asphalt Pavement Association

Spring 2024



2024 SUMMER SOCIAL



WIRTGEN
GROUP

MURPHY
TRACTOR & EQUIPMENT CO.

murphytractor.com



WIRTGEN



VÖGELE



HAMM



KLEEMANN



Preserving Pavements with
Innovative Solutions since 1932

Asphalt Emulsions
& Cutbacks

Micro Surfacing
Slurry Seal

Chip Seal

Asphalt Underseal

High-performance
Fog Seals

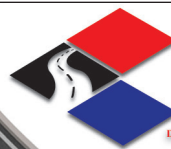
Non-Woven
Geotextile

Crack Sealants

High-performance
Cold patch



314-219-7305 | www.MissouriPetroleum.com



ULTRAPAVE

DIVISION OF TEXTILE RUBBER AND CHEMICAL COMPANY

SBR Polymers for Hot Mix
Antistrip Polymers for Asphalt (UP5000)

John Murphy
706-618-3625

1300 Tiarco Drive SW
Dalton, GA 30721



Hot Oil on Time

Coastal Energy Corporation
Paving the way since 1979

1 Coastal Drive
Willow Springs, MO 65793
417-469-2777
www.coastal-fmc.com

MAPA ASPHALT NEWS

The Asphalt News is produced quarterly and distributed to association members and others interested in Missouri's asphalt industry.

Konn Wilson
President

Andy Ernst
Vice President

Tyson Collins
Secretary-Treasurer

Cecilia Cain

Casey Castrop

Frank Champion

Steve Jackson, P.E.

Brian Johanning

Josh Kincaid

Andy LaPlante

Matt Lindsay

Bryan Jones

Nick Stone

David Wilkins

Dale Williams

Executive Director
Mobile: (573) 690-9676
Email: dalewilliams@moasphalt.org

Tammy Cavender

Office Manager
Office: (573) 635-6071
Email: tammy@moasphalt.org

Rick Biermann

Director of Bus. Development - St. Louis
Mobile: (314) 348-3785
Email: rick@moasphalt.org

MAPA Contact Information

1221 Jefferson Street
Jefferson City, MO 65110
Phone: (573) 635-6071
Fax: (573) 635-6134

4 The Way I See It

Remember, every vote counts, and your efforts between now and November will be critical in securing a victory that will have a lasting impact on our industry and our state.

5 2024 SAPA Summer Meeting Recap

SAPA summer meeting focused on collaboration, sustainability, workforce development, and leadership, providing a platform for state associations to share insights and align on national priorities.

6 MAPA's 2024 Summer Meeting & Social a Huge Success

Check out all the highlights from this year's summer meeting.

8 MAPA 2025 Events - Save the Dates!

There are lots of upcoming events you won't want to miss. Register Today!

9 MAPA-REF Annual Golf Outing

Mark your calendar and register now for the upcoming annual golf outing at Tanglewood Golf Course.

11 Welcome New MAPA Members

Join us in welcoming two new members to the association.

12 Innovative Payment Workshop

MAPA will be hosting a workshop that will highlight innovative pavement design and construction techniques which will include thick lift paving and HiMA Asphalt.

FOLLOW US ON SOCIAL MEDIA



@MoAsphalt



moasphalt



facebook.com/MoAsphalt



moasphalt1

The Way I See It

I want to take a moment to express my deepest gratitude to all of you who have taken the time to promote and encourage your employees to support and vote for Mike Kehoe in the recent Republican primary. Thanks to your dedication and grassroots efforts, Mike won the primary race by a significant margin of nearly 48,000 votes over his closest competitor, Bill Eigel. This is a tremendous achievement and a clear sign that our collective efforts are making a difference.

Your commitment goes beyond just casting a vote; it reflects a shared belief in the importance of strong leadership that understands and supports our industry. Mike Kehoe's victory is not just a win for him but a win for all of us who understand the critical role transportation infrastructure plays in Missouri's economy. By securing his position as the Republican nominee, we have taken a significant step toward ensuring that our state's transportation needs are met with the dedication and resources they require.

The results of this election are crucial for ensuring that funding for transportation in Missouri remains protected. However, our work is far from over. As we look ahead to November 5, it's imperative that we maintain our momentum. We cannot afford to take our foot off the gas now. The road to victory in November will require the same level of energy and commitment that brought us success in the primary. While the odds favor a Republican win in November, we must not take anything for granted. We must stay vigilant and fully engaged.

Looking back, the success we've achieved so far is a testament to what we can accomplish when we unite behind a common goal. It's easy to see how our efforts have resonated not just within our industry, but across the state, as we advocate for policies that will benefit Missouri for generations to come. The future of our roads, our economy, and our communities depends on the decisions we make now, and it's clear that electing Mike Kehoe is a critical part of that future.

I recently had the opportunity to participate in a Zoom call with Mike Kehoe, where he quoted Mizzou Head Football Coach Eliah Drinkwitz, saying, "Why Stop Now?" This powerful message resonates with our mission as we prepare for the general election. We've come this far, and we must continue to push forward with the same determination and focus.

Remember, every vote counts, and your efforts between now and November will be critical in securing a victory that will have a lasting impact on our industry and our state. So, let's continue to work hard, stay engaged, and keep voters energized.

As we approach November 5th, I urge you to remember: Vote like your paycheck depends on it—because it just might!



Executive Director
Dale Williams




JOIN
THE
ROLAND TEAM

Missouri locations

Bridgeton, MO
4670 Crossroads Industrial Dr
Bridgeton, MO 63044
Phone: 314-291-1330

Cape Girardeau, MO
3364 Percy Drive
Cape Girardeau, MO 63701
Phone: 573-334-5252

Columbia, MO
4110 I-70 Drive South East
Columbia, MO 65201
Phone: 573-814-0083

Palmyra, MO
701 Industrial Drive
Palmyra, MO 63461
Phone: 573-769-2056



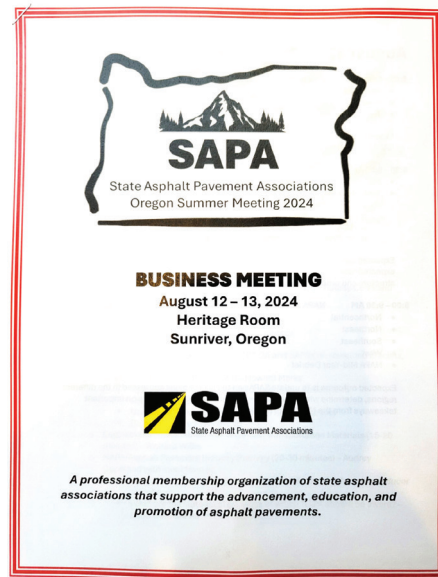
2024 SAPA Summer Meeting Recap

The 2024 State Asphalt Pavement Association (SAPA) Summer Meeting, held in Sunriver, Oregon, from August 12-13, brought together SAPA leadership to discuss key issues and strategies for advancing the asphalt pavement industry. This year's meeting focused on collaboration, sustainability, workforce development, and leadership, providing a platform for state associations to share insights and align on national priorities.

Key highlights included:

- **NAPA and SAPA Strategic Partnership:** Audrey Copeland and other NAPA leaders provided updates on national policy, legislative strategies, and environmental issues. The session emphasized the importance of coordination between NAPA and SAPAs to ensure unified messaging and strategic action on issues such as funding, sustainability, safety, training, and workforce development.
- **Asphalt Pavement Alliance and Asphalt Institute:** Presentations by Reed Ryan and representatives from the Asphalt Institute focused on industry expectations and the future of these critical organizations. Discussions highlighted the importance of member engagement, strategic partnerships, and the role of national partners like FHWA, EPA, and AASHTO in shaping the industry's future.
- **Asphalt Plant Operation & Industry Sustainability:** Richard Willis and Trevor Waggoner led a session on the connection between asphalt plant operations and sustainability. The discussion provided SAPAs with insights into how plant efficiency could impact state and federal sustainability programs and offered guidance on getting started with sustainability initiatives.
- **State Association Leadership and Executive Performance:** A focused session on state association leadership, led by Marshall Klinefelter, Russell Snyder, and Erich Ponti, addressed the challenges of managing board relationships, member engagement, and maintaining work-life balance. This session provided valuable insights for SAPA executives on navigating their professional careers effectively while meeting organizational objectives.
- **Work Zone Safety and Workforce Development:** Tim Smith, Kevin Burke, and John Hickey facilitated deep-dive discussions on work zone safety, low carbon transportation materials, and workmanship training. These sessions were designed to highlight progress and challenges, providing a forum for sharing best practices and identifying barriers to further advancement.

The meeting concluded with a look ahead to the 2025 SAPA Summer Meeting, reflecting on the progress made and the challenges ahead. This year's gathering reinforced the value of collaboration across state associations and the need for ongoing efforts to address industry challenges.



For Equipment Financing, Operating Lines of Credit and the ability to take managing your accounts to the next level with our Mobile Banking app.

Look to the Commercial Loan Experts at:

Hawthorn
BANK

1-877-442-9846

EQUAL HOUSING LENDER Member FDIC HawthornBank.com NASDAQ: HWBK

Interstate Testing Services

Specializing in highway construction materials testing using cutting edge equipment and DOT certified technicians

Many other specialized testing capabilities and on site testing services.

- Asphalt Mixture Testing and Design
- Asphalt Binders
- Concrete Testing
- Aggregates
- On-Site Testing Services

AMRL, AASHTO R-18 accredited

Office Phone: 314-994-0641 | Fax: 314-994-0687
Email: alaplante@interstatetesting.com



MAPA's 2024 Summer Meeting & Social a Huge Success

MAPA's Summer Event kicked off Wednesday, July 10, with golf at The National Golf Course of Kansas City. Golfers enjoyed beautiful weather on a gorgeous course in northern Kansas City. Later that evening, a reception was held at the Loews Hotel. This was a great networking opportunity for all MAPA members.

Thursday was a full day, starting with keynote speaker, Mitch Holthus, the Voice of the Kansas City Chiefs, who was sponsored by MAPA's Emerging Leaders. Mitch did an amazing job of intertwining Chief experiences with work environment situations. He had an uplifting message about internal motivation and being a team player.

The afternoon was spent taking a tour of Arrowhead Stadium, home of the Kansas City Chiefs. After a delicious steak dinner, the Emerging Leaders held its annual auction. The night concluded with a cornhole tournament, sponsored by the Women of Asphalt – Missouri Branch. The cornhole tournament is always a great networking and fun opportunity. This year's winners are listed on the following page. First place won a trophy and bourbon donated by Missouri Petroleum Products Co., LLC and Petro Logistics.



Cornhole Tournament Winners

Left to Right

1

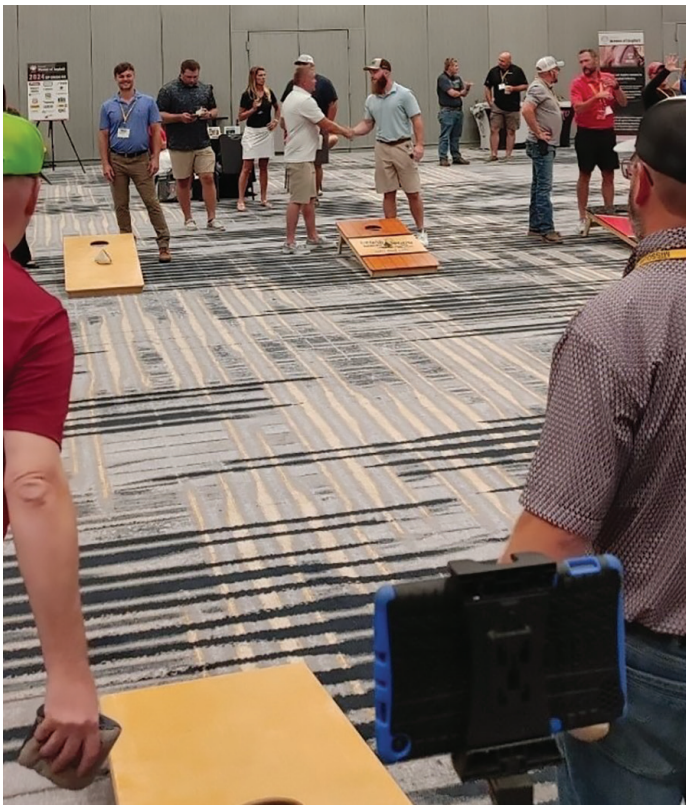
First Place
Allen Akowicz
& Joe Bardill

2

Second Place
Robert Bond
& Justin Zimpfer

3

Third Place
Tim Bray
& Bill Gadwood



This event is especially enjoyable for MAPA because it brings members together to build new relationships and foster existing ones!

A special thank you to all our sponsors this year!

Thank you
2024 Summer Meeting Sponsors!



MAPA 2025 Events - Save the Dates!

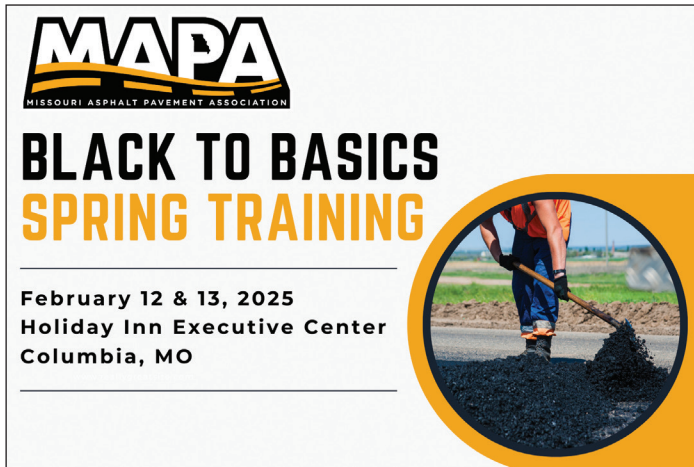


MISSOURI RIDES ON US

MAPA
MISSOURI ASPHALT PAVEMENT ASSOCIATION

2025 Annual Conference

January 6-8, 2025
Holiday Inn Executive Center in Columbia, MO



MAPA
MISSOURI ASPHALT PAVEMENT ASSOCIATION

BLACK TO BASICS SPRING TRAINING

February 12 & 13, 2025
Holiday Inn Executive Center
Columbia, MO



WOMEN OF ASPHALT
MISSOURI
LEAD & INSPIRE

Save the Date

TOPGOLF SOCIAL EVENT

NOVEMBER 21, 2024
2:00 PM - 4:00 PM
CHESTERFIELD, MO

HAPPY HOUR
SPONSORED BY

FABICK **CAT**



MAPA/AAPA Joint Meeting/Tour

The Missouri Asphalt Pavement Association's Emerging Leaders will be hosting a tour at the National Center for Asphalt Technology in conjunction with its annual joint meeting with Arkansas Asphalt Pavement Association's Young Leaders.

All members of MAPA and AAPA are welcome to join!

Below is a tentative agenda. Registration will open soon. Check www.moasphalt.org/events for updates. You may reserve a room at The Collegiate Hotel by calling (334) 821-2646 and ask for the "Asphalt Room Block."



**EMERGING LEADERS
JOINT MEETING**

MAPA **AAPA**

OCTOBER 6-9, 2024 Registration Coming Soon!

**MAPA/AAPA JOINT NCAT TOUR
TENTATIVE AGENDA**

SUNDAY - OCTOBER 6, 2024	
5-7 PM	Welcome Reception New Realm Brewery Co. (Dinner on Your Own)
MONDAY - OCTOBER 7, 2024	
8:00 - 8:30 AM	Welcome and NCAT Introduction NCAT
8:45 - 9:45 AM	Breakfast & Learn AR Test Section (GTR Presentation by Liberty Tire)
10:00 - 10:45 AM	TBD
1:00 - 6:00 PM	Golf (box lunch included) RTJ Grand National
7:00 - 10:00 PM	Dinner & Social Good Times (Cash Bar)
TUESDAY - OCTOBER 8, 2024	
8:00 - 9:00 AM	Breakfast On Your Own
9:30 - 11:30 AM	Walking Tour of NCAT Test Track and Preservation Sections
12:15 - 1:30 PM	Lunch and Learn NCAT
1:45 - 3:45 PM	NCAT Lab Tour/Q&A
6:00 - 8:00 PM	Group Dinner Amsterdam Cafe (Cash Bar)
WEDNESDAY - OCTOBER 9, 2024	
8:00 AM	Optional Walking Tour of Campus
TBD	Depart for Airport

Women of Asphalt-Missouri Branch Topgolf Event

Save the date to come out and support the Women of Asphalt at the Topgolf Social on November 21, 2024, from 2:00 PM - 4:00 PM in Chesterfield, MO. Grab your colleagues and your clubs and network with others while supporting the growth of women in the asphalt industry! Visit www.moasphalt.org/events or use the QR code above for more details and registration updates.

MAPA-Research and Education Fund (REF) Annual Golf Outing



September 25, 2024

MAPA-REF Annual Golf Outing

Tanglewood Golf Course - Fulton, MO



moasphalt.org/events

Register Now!

Join us on September 25 at Tanglewood Golf Course and support the MAPA-REF Scholarship Program! All proceeds go to students pursuing a degree in an infrastructure related field, which may include engineering, construction management, geotechnical, surveying, diesel mechanics, heavy equipment operation, and more.

Use the QR Code or visit www.moasphalt.org/events to register.

SUPPORT YOU TRUST

Tackle any challenge
with Fabick Cat.



LET'S DO THE WORK. 800.845.9188 | fabickcat.com

© 2022 Caterpillar. All Rights Reserved. CAT, CATERPILLAR, LET'S DO THE WORK, their respective logos, "Caterpillar Corporate Yellow", the "Power Edge" and Cat "Modern Hex" trade dress as well as corporate and product identity used herein, are trademarks of Caterpillar and may not be used without permission.



ADVERTISER'S INDEX

Bomag Fayat Group & CMW Equipment.....	16	Interstate Testing Services	5
Coastal Energy Corporation	2	Mississippi Lime	12
CMW Equipment	13	Missouri Petroleum.....	2
Ergon Asphalt & Emulsions, Inc.	15	Murphy Tractor & Equipment Co.	2
Delta Companies, Inc.	12	Premier Testing Laboratories, LLC	12
Fabick CAT	9	Roland Machinery Co.	4
Foley Equipment.....	11	Ultrapave	2
Hawthorn Bank	5	Vance Bros Inc.	10

PRESERVING PAVEMENTS

SINCE 1923

MICRO SURFACING SLURRY SEAL CHIP SEAL FOG SEALING CRACK SEALING

Emulsions Polymer-Modified Asphalts Cutbacks

Specializing in work for Cities, Counties and State DOT's

All Emulsified Asphalt based treatments installed for the preservation research at NCAT/MNROADS were completed by Vance Brothers, Inc. crews.



1923 - 2023

vancebrothers.com



Welcome to **MAPA!**



Ammann Americas, Inc.
200 S. Orange Ave, Ste., 1050
Orlando, FL 32801
407-634-7701 | www.ammann.com

Location: North America

Services: Supplier of mixing plants, machines, and services to the road construction industry.

City of St. Peters
100 Boone Hills Drive
Saint Peters, MO 63376
636-939-4411 | www.stpetersmo.net

Location: City of St. Peters

Services: Milling and paving, joint repair, pothole repair, concrete slabs, curbs, and sidewalks.

Welcome New MAPA Members

MAPA would like to welcome two new members to the Association!

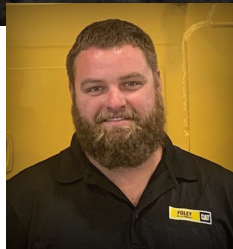


YOUR PAVING PARTNER

SALES • RENTAL • PARTS & SERVICE



Ryan Harman
RPHarman@FoleyEQ.com
Ph.: (785) 825-4661
Cell: (785) 303-0665



Tim SIRRIDGE
TJSIRRIDGE@FoleyEQ.com
Ph.: (816) 753-5300
Cell: (816) 206-7275

Paving experts, Ryan Harman and Tim SIRRIDGE, have experience in every aspect of the paving business including fleet management and maintenance, machine acquisition and life cycle management, work flows, resource allocation and profitable operations.

Give them a call for information and advice on the entire line of Cat® and Weiler paving machines.



FoleyEQ.com

© 2023 Caterpillar. All Rights Reserved. CAT, CATERPILLAR, LET'S DO THE WORK, their respective logos, "Caterpillar Corporate Yellow", the "Power Edge" and Cat "Modern Hex" trade dress as well as corporate and product identity used herein, are trademarks of Caterpillar and may not be used without permission. www.cat.com / www.caterpillar.com

Innovative Pavement Workshop

October 3, 2024 • Location TBD

MAPA will be hosting a workshop that will highlight innovative pavement design and construction techniques which will include thick lift paving and HiMA Asphalt. The workshop is being provided as service to our membership to give the industry innovative solutions as we compete on the future projects that will reconstruct I-70 and I-44.

MAPA/MoDOT Quarterly Meeting Summary

- New DBE Reporting: New software pilot on 6 projects; full implementation planned for January 2025.
- Bituminous Technical Team: Proposed changes to binder replacement percentages; MAPA to provide comments.
- Paving Widths: Clarification of Section 403.13.1 needed; MoDOT to share for comments.
- GTR in SMA Mixtures: Testing ongoing; potential full implementation in January 2025.
- 30-Degree Safety Wedge: Industry seeking clarification; inconsistency noted in usage.
- Road Closures for Paving: JSP success in Northwest District; policy review for statewide implementation.
- Milled Surfaces: MoDOT open to limited conditions for leaving milled surfaces open.
- Low Volume Road Program: Map and project list attached; \$100 million from General Revenue allocated.
- New Business: Industry requests sharing future paving quantities for better planning; MoDOT to revisit the issue.


Visit MAPA/MoDOT Quarterly Meeting Minutes to view documents from the August 6 meeting.



MISSISSIPPI[®]
LIME

Discovering what's possible with calcium

www.mlc.com (800-437-5463)



THANK YOU

**to all the advertisers
for your support of
this publication.**



Office Phone: 573-406-1383
Fax: 573-406-1398
Email: infoptlabs@gmail.com
www.premiertestinglab.com

Asphalt Mixture

- Superpave Volumetric Mix Design
- Marshall Mix Design
- Stone Mastic Asphalt Design
- Recycle Materials (RAP, RAS) Analysis
- Ultra-Thin Bonded Wearing Course Design
- Hamburg Loaded Wheel Test
- Asphalt Pavement Analyzer
- Moisture Damage Susceptibility Testing
- Profilograph Services
- Field and Engineering Service

Asphalt Binder

- AASHTO M320 and MP19 PGB Verification and Classification Testing
- Asphalt Extraction Testing using Trichloroethylene
- Many other specialized testing capabilities



DELTA
Companies Inc.

A COLAS COMPANY

**BUILDING INFRASTRUCTURE
TO CONNECT YOUR COMMUNITY.**



CMW
Equipment

St. Louis, MO
800-283-1336
www.cmw-equip.com

Over 65 years of dependability supported by:



CARLSON
PAVERS, SCREEDS

MAULDIN DISTRIBUTORS/PAVERS

VOLVO ROLLERS



STEWART AMOS SWEEPERS

GORMAN RUPP PUMPS

SAKAI ROLLERS

FALCON HOTBOXES



DURAPATCHER SPRAY PATCHERS

CIMLINE CRACK SEALERS

SUPERIOR BROOMS

ABG PAVERS



BOMAG MILLS/ROLLERS/SOIL STABILIZERS



BOMAG/CEDARAPIDS PAVERS



BLAW KNOX ROAD WIDENERS

Sales * Rental * Service * Parts

MAPA MEMBERS

The contractor's skill, experience and equipment relates directly to the ultimate quality of your asphalt paving project. Producing top quality work is the hallmark of MAPA's members. Whether you're building a highway, street, parking lot or driveway, look to a MAPA member. We'll be happy to show you the way.

Producer

Capital
Christensen Construction/
Christensen Brothers
Delta Companies, Inc./Delta Asphalt, Inc./
Apex Paving Company
Emery Sapp and Sons, Inc.
Herzog Contracting Corporation
Ideker, Inc.
Magruder Paving, LLC
N.B. West Contracting Company, Inc.
New Frontier Materials
Norris Asphalt Paving
Pace Construction Company
Simpson Materials Company
Superior Bowen
Willard Asphalt

Non-Producer Paver

Accurate Asphalt Paving Co., Inc.
Advanced Asphalt Paving
& Concrete, LLC
Available Asphalt & Contracting, LLC
BuildPro STL Construction, Inc.
C&B Paving Company
Diversified Contractors
E. Meier Contracting
Ford Asphalt Company
Hotshot Asphalt, LLC
Leritz Busy Bee Paving
L. Keeley Construction
Mainstreet Asphalt Maintenance, LLC
Pioneer Paving & Sealing
Seal-O-Matic Paving
Tramar Contracting, Inc.

Bituminous

Coastal Energy
Ergon Asphalt & Emulsions, Inc.
Flint Hills Resources
Heartland Asphalt Materials
Marathon Petroleum
Missouri Petroleum Products, Inc.
Peterson Oil Company
Phillips 66 Asphalt
Spirit Asphalt, Inc.

Aggregate

Ash Grove Aggregates, Inc.
Con Agg Companies
Martin Marietta

County & City

Boone County
City of Clayton
City of Saint Peters
City of Springfield Public Works
Cole County Public Works
Greene County Highway Department
Lincoln County Highway Department

Engineering/Consulting

Bartlett and West
Crossroad Pavement Consulting
Engineering Surveys & Services
Lochmueller Group
Olsson - Kansas City
PaveTech Consulting, Inc.
SCI Engineering
State Technical College of Missouri

Associate

All State Materials Group
Ammann America, Inc.
Antigo Construction, Inc.
Arch Transit, LLC
Arkema Road Science
Asphalt Materials, Inc.
Asphalt Plus
Astec Industries
Barker, Phillips, & Jackson Inc.
Berry Tractor & Equipment
Blacklidge Emulsions, Inc.
Bluegrass Testing Laboratory
BOMAG Americas
Buckley Powder
Buildex, Inc.
Central Power Systems & Services
CMW Equipment
Corrective Asphalt Materials, LLC
Crafco
CWMF Corporation
Dustrol, Inc.
EquipmentShare
FabickCAT
FleetWatcher, LLC
Foley Equipment
FORTA
Gilson Company, Inc.
GS Grinding Services, LLC
G.W. Van Keppel Co.
Hall Brothers, Inc.
HaulHub Technologies

MAPA MEMBERS Continued

Hi-Tech Asphalt Solutions, Inc.
Home Builder's Association of
Central Missouri
Ingevity
Innovative Roadway Solutions
Interstate Testing Services
Kraft Tank Corporation
Lockton Companies
Luby Equipment Services
MACC Contracting, Inc.
Martin Equipment of Illinois
Maxam Equipment

MayeCreate Design
McMahon Berger, P.C.
Mississippi Lime Co.
MOBA Corp.
Murphy Tractor & Equipment Co.
Ozark Laser & Shoring
Pavon Corporation
Petro Logistics, LLC
Premier Testing Labs
Purple Wave Auction
REGEN Fiber, LLC
Roland Machinery Co.

Stansteel Corporation
Surface Tech
Tarmac International, Inc.
Topcon Solutions
Ultrapave
Verde Resources, Inc.
Wallis Lubricants
Wright Asphalt Products Co.

YOUR RESOURCE FOR EVERY ROAD.

We are proud to be your go-to roadway resource. Let one of our specialized team members assist you on your next project, and find the answers you're looking for today.

 **Ergon Asphalt
& Emulsions, Inc.**

ergonasphalt.com



THANKS FOR ALL YOU DO

**WE KNOW THAT YOU WORK LONG, HARD
DAYS AND BOMAG PAVERS WILL BE
THERE WITH YOU FOR EVERY MILE.**

We at BOMAG appreciate your dedication to your job, the way you take pride in your craft, and the long hours you put in to building our roads and keeping our country moving forward.

We take pride in our work too. Designed and built in the USA, our BOMAG CR-series pavers can withstand the real-world rigors of the toughest jobsites you face. We understand your everyday challenges, and our dedicated dealers and staff are here to stand by you during every mile.

To learn more about our paving products, visit www.bomag.com, or contact your local authorized dealer.

CMW
Equipment
www.cmw-equip.com

12890 Penridge Drive • Bridgeton, MO 63044 • 800-283-1336

*Serving Eastern Missouri,
Central and Southern Illinois*

BOMAG
FAYAT GROUP

www.bomag.com/us-en