

MAPA ASPHALT NEWS

Missouri Asphalt Pavement Association

Spring 2023





WIRTGEN
GROUP

MURPHY
TRACTOR & EQUIPMENT CO.

murphytractor.com



WIRTGEN



VÖGELE



HAMM



KLEEMANN



Preserving Pavements with
Innovative Solutions since 1932

Asphalt Emulsions
& Cutbacks

Micro Surfacing
Slurry Seal

Chip Seal

Asphalt Underseal

Tire Rubber Modified
Asphalt Sealer

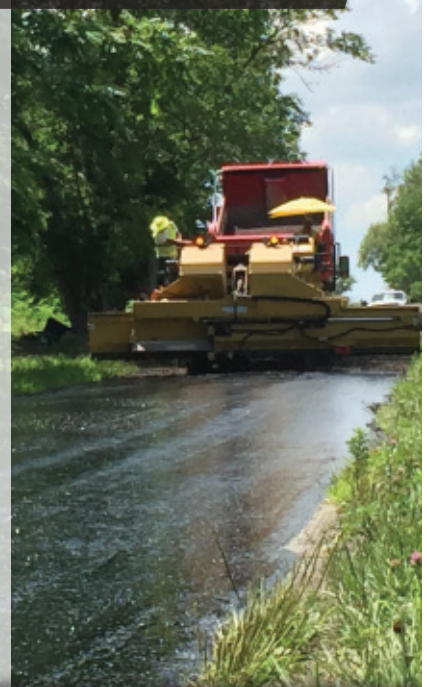
High-performance
Fog Seals

Paving Interlayers

Geotextiles &
Geogrid

Crack Sealants

High-performance
Cold patch



314-219-7305 | www.MissouriPetroleum.com



ULTRAPAVE

DIVISION OF TEXTILE RUBBER AND CHEMICAL COMPANY

SBR Polymers for Hot Mix
Antistrip Polymers for Asphalt (UP5000)

John Murphy
706-618-3625

1300 Tiarco Drive SW
Dalton, GA 30721

MAPA ASPHALT NEWS

The Asphalt News is produced quarterly and distributed to association members and others interested in Missouri's asphalt industry.

Brian Johanning
President

Konn Wilson
Vice President

Andy Ernst
Secretary-Treasurer

Cecilia Cain

Casey Castrop

Frank Champion

Tyson Collins

Steve Jackson, P.E.

Josh Kincaid

Andy LaPlante

Matt Lindsay

Kyle Phillips

Nick Stone

David Wilkins

Dale Williams

Executive Director

Mobile: (573) 690-9676

Email: dalewilliams@moasphalt.org

Tammy Cavender

Office Manager

Office: (573) 635-6071

Email: tammy@moasphalt.org

Rick Biermann

Director of Bus. Development - St. Louis

Mobile: (314) 348-3785

Email: rick@moasphalt.org

MAPA Contact Information

1221 Jefferson Street
Jefferson City, MO 65110

Phone: (573) 635-6071

Fax: (573) 635-6134

4 The Way I See It

The 2023 Missouri Legislative Session is one for the record books.

4 MAPA Parking Lot Guide

This guide touches on every aspect, from pavement design through the construction process. Content includes: Pavement Thickness Design, Site Design Considerations, Design of Asphalt Mixtures, and Construction.

5 President of MAPA Board of Directors

Get to know Brian Johanning, President of MAPA Board of Directors, in this question and answer session.

6 Fourth Annual MAPA Emerging Leaders Clay Bird Shoot

Over 100 shooters tested their skills at the sixteen-station course at Prairie Grove Shotgun Sports in Columbia, MO.

7 MAPA Members Speak Out at Missouri State Capitol

MAPA's 197 Club members gathered at its annual event on April 24 and had an opportunity to meet with multiple Missouri legislators.

8 Woman of Asphalt

Introducing elected officers and Spotlight on Laurel McClelland who has been in the asphalt industry for 10 years.

FOLLOW US ON SOCIAL MEDIA



@MoAsphalt



moasphalt



facebook.com/MoAsphalt



moasphalt1

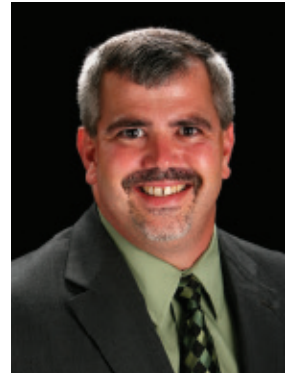
The Way I See It

The 2023 Missouri Legislative Session is one for the record books. If you recall, last year the Missourians for Transportation Investment (MFTI) formulated an idea to utilize a portion of the nearly \$5 billion state budget surplus to fix Missouri's Interstates starting with I-70. At the time, many of the naysayers laughed at the idea and said it would never happen. Then on January 18, Governor Mike Parson, in his State of the State address called on the legislature to appropriate \$859 million dollars to rebuild and widen approximately 55 miles of I-70, this was far short of the \$2.7 billion estimate to rebuild I-70, but it was a start. As budget negotiations started to take shape, it was apparent that there might be a path to reconstruct and widen I-70 to 3 lanes in each direction.

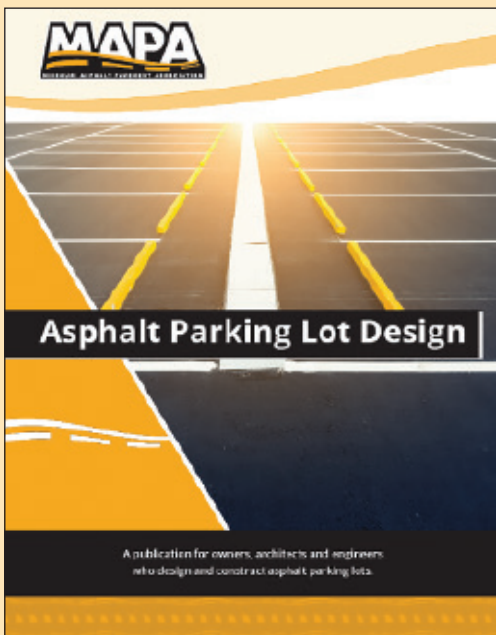
Under the leadership of Senator Lincoln Hough, Senate Appropriations Chair and Representative Cody Smith, House Budget Chair, the legislature appropriated over \$2.95 billion for transportation in Missouri out of GR. The majority of the money appropriated, \$2.8 billion, will be used to rebuild and widen I-70 to 3 lanes in each direction. This is a combination of \$1.4 billion GR transfer and \$1.4 billion in bonding with the bonds being paid out of GR.

The budget also includes \$100 million from GR for minor roads. This money will mirror the Governor's Low Volume Road Program which was funded during the 2022 legislative session. As was last year's program all the money is expected to go directly to overlaying minor and low volume roads. MAPA will be working with MoDOT to get the projects let and awarded in an expedited manner as we expect this program to have to be completed by the end of the state fiscal year on June 30th, 2024. Also included in the budget is \$20 million to do an environmental study on I-44 and \$28 million to add lanes to I-44 between Route 65 and Route 13 in Springfield.

These budget bills now head to the Governor's desk for his signature. All this money, totaling close to \$2.95 billion is all from GR! What a great session for the citizens and the state of Missouri! Great things happen when we all work together, so thank you to everyone who took the time to visit the State Capitol and contact your local elected officials. I would like to recognize our lobbyist Noel Torpey and the team at Husch Blackwell Strategies along with Jeff Glenn and MFTI for orchestrating the grass roots effort. Finally, a special thank you to Governor Parson, Senator Hough, and Representative Smith for their leadership. To close, I want to quote Governor Parson from his State of the State Address, "We are not done yet!"



Executive Director
Dale Williams



MAPA Parking Lot Guide

What goes into a parking lot design? A question that comes up often when addressing new construction. Designing a parking lot is quite complex and can include pavement design, traffic analysis, geotechnical analysis, mix selection, and location assessment. Parking lots hold vehicles and traffic flow differently than roadways and are more susceptible to starting, stopping, and turning. This causes more stress in high traffic areas.

MAPA created a guide for engineers, consultants, and contractors to refer when addressing these areas of design. This guide touches on every aspect, from pavement design through the construction process. Content includes: Pavement Thickness Design, Site Design Considerations, Design of Asphalt Mixtures, and Construction.

This guide is available online and in print. Visit MAPA's website for more details and to view the Parking Lot Design Guide.



President of MAPA Board of Directors Get to Know Brian Johanning, Superior Bowen Asphalt Company

How did you get started in your career, and what led you to working in asphalt?

My father was a long time employee at Mid-City Lumber so I've worked around construction since I was in high school. Most of my family comes from a more rural background and upbringing so getting into heavy civil construction was quite natural for me.

What are your favorite hobbies or hidden talents?

I love being outdoors and conservation. Normally in October I start getting into hunting mode and spend a lot of time at our family farm in Northern Missouri. We've had it in the family for 60 years and enjoy the year round process of conservation habitat preservation. Normally in April, I trade my hunting boots for golf shoes, a fishing pole and flip flops. In my professional role, I'm very fortunate to be able to do many of my hobbies with clients, which opens up tiny windows on the weekend to chase kids to games.

What has been your most memorable moment in your current role or during your career?

There have been a lot of fun ones. Seeing people I've worked with and helped along the way achieve success is what brings me a lot of happiness. From a project perspective, cutting the ribbon this month on a \$36M athletic complex which was a design-build-operate-maintain contract is probably at the top for me.

If you could travel anywhere, where would you go and why?

I'd love to fly a private jet to Hawaii. I hear it's nice there but I've long dreaded the plane ride.

Knowing what you do today, what piece of advice would you give yourself at the beginning of your career?

Early in my career I really didn't appreciate what a corporation was and had a hard time marrying the idea that the company really cared about me. It was a place you go, do work, go home and hopefully get paid. As I've grown, I've learned to really enjoy every day, every experience and worry a lot less about things I can't control. The relationships you build are so very valuable and important. Money isn't the only measure of wealth, the people you help and sweat with along the way is what brings me the most joy.

What is your idea of a perfect day?

Winning a big project, high-fiving our team members, loading up with my family and leaving for the farm or lake in anticipation of a fun-filled weekend. Maybe I killed a turkey or a 175-class buck that morning too.

Why do you like being a part of MAPA?

The people. It's a really wonderful group of individuals who leave their egos at the door when we get together. In theory, we're competitors but the group has an amazing ability to see the forest through the trees and root for one another's success. We have fun as a group.

If you could have dinner with anyone (living or deceased), who would it be and why?

I'd love to have dinner with my grandfather Virgil again. I miss him a lot, he lived a full life and saw the world and maintained a very level head. I miss his advice.

What would you like to accomplish as MAPA's President?

I'd love to not screw it up! Our industry has such great momentum that we just have to keep the train on the tracks! If we can get a few things accomplished to make work zones safer, returning craft workers to their families at the end of the day, we've certainly accomplished something.

Do you have a mentor or supervisor that inspired you in your career?

Many more than I can type. Without my spouse and a really strong extended family, none of what I've accomplished would be possible. They motivated me from an early age and now the next generation motivates me. The Bowen family has been so incredibly generous to my family and I with their time, talent, and treasures. The executive leadership group at our firm is as strong as it's ever been. Their presence, guidance and work ethic are infectious. I still talk to a former mentor, Tim Paulson a lot from ESS as well. He's had a big impact on my career and has certainly inspired me to forge ahead every day. He roots for me a lot and I appreciate that.



MAPA Events Highlights



Fourth Annual MAPA Emerging Leaders Clay Bird Shoot Hits the Mark

The 4th Annual Clay Bird Shoot brought sunshine, good weather, networking, and a lot of fun! This event is sponsored by the MAPA Emerging Leaders and hit a record number of teams this year. Over 100 shooters tested their skills at the sixteen-station course at Prairie Grove Shotgun Sports in Columbia, MO.

A special thank you to our sponsors!

- **Raffle Sponsor** – Ingevity
- **Tournament Sponsors** – Coastal Energy, Con-Agg Companies, Ford Asphalt, New Frontier Materials
- **Lunch Sponsors** – Missouri Petroleum, New Frontier Materials
- **Drink/Snack Sponsor** – Arch Transit, CWMF Corp, Roland Machinery Company
- **Station Sponsors** – Astec Industries, ConAg Auctions, Con-Agg Companies, CWMF Corp, E. Meier Contracting, Emery Sapp & Sons, MayeCreate Design, Murphy Tractor, N.B. West Contracting, Pace Construction, Pacific GeoSource, Purple Wave Auction



Championship 1st Place
Emery Sapp & Sons:
Brian Hopper, Brad Lindsey,
and Shawn Sapp



A Flight 1st Place
Pacific GeoSource:
Carl Poettker, Joe Bardill,
and Tom Tod



B Flight 1st Place
NB West:
Tom Mitana, Alexie Onderick,
and Robby Bond



Barry Snyder
of Spirit Asphalt
was the \$1,000 Bass Pro
Raffle Winner



**First Winner of
the Attendance Prizes**



MAPA Members Speak Out at Missouri State Capitol

MAPA's 197 Club members gathered at its annual event on April 24 and had an opportunity to meet with multiple Missouri legislators. This event gives the club members a chance to network and discuss the important issues and concerns facing the asphalt industry with Missouri's lawmakers.

Following the 197 Club event, MAPA hosted its annual Lobby Day at the Missouri State Capitol on April 25. Representatives from various companies gathered and wore the yellow MAPA safety vests proudly as they visited their local legislators. There is always something to talk about when it comes to transportation and highways!



Speaker of the House Dean Plocher speaks with 197 Club members.



L to R: Andy Ernst, Dale Williams, Kyle Phillips, Brian Johanning, Ryan Casey, Tyson Collins, Steve Jackson, Konn Wilson, and Rick Biermann



MAPA members also had the opportunity to meet with Missouri Lieutenant Governor Mike Kehoe and thank him for his continued support. Kehoe was an advocate for the motor fuel tax increase passed during the 2021 session.

Hot Oil on Time



Coastal Energy Corporation
Paving the way since 1979

1 Coastal Drive
Willow Springs, MO 65793
417-469-2777
www.coastal-fmc.com



MISSISSIPPI[®]
LIME

Discovering what's possible with calcium

www.mlc.com (800-437-5463)

Women of Asphalt Missouri Branch Officers Elected



Victoria Woods
Chairwoman
Ingevity

Join MAPA in welcoming the following new officers of the Women of Asphalt (WofA)– Missouri Branch. The WofA is a national coalition which supports women in all aspects of the asphalt industry through mentoring, education, advocacy, and encouraging women to seek careers in the asphalt industry.

Thank you to Debbie Novak of Missouri Petroleum/Lionmark who previously served as Chairwoman and currently serves as WofA National Board Member.

Follow WofA – Missouri Branch on Facebook and LinkedIn.  



Cecilia Cain
Vice Chairwoman
Delta Companies, Inc.



Women of Asphalt Spotlight

Laurel McClelland has been in the asphalt industry for 10 years. She began her career as a Quality Control Technician and is currently the Laboratory Manager for Heartland Asphalt Materials. Laurel has a background in Chemistry Education and was a science teacher before transitioning to quality control.



Laurel McClelland
Laboratory Manager
Heartland Asphalt

Laurel’s favorite part of working in the construction industry is the variable nature of the work by season. She also enjoys sharing her knowledge of asphalt and quality control by presenting at local schools and career events. In her free time, Laurel trains Jiu Jitsu and spends time with her husband and two daughters, raising sheep, dog sitting, and riding horses.

Iain Jack, National Technical Manager for Colas Solutions and Laurel’s supervisor said “I’ve worked with Laurel for almost 10 years now. From the day she started, she’s been energetic and excited to learn about our business. She has a learning aptitude and is driven to get her department running smoothly. I just need to point Laurel in a direction and things get done, usually with a smile. During the busy summer work season when QC samples and production / application issues are coming fast and furious, Laurel just handles things.”

For Equipment Financing, Operating Lines of Credit and the ability to take managing your accounts to the next level with our Mobile Banking app.



Look to the Commercial Loan Experts at:

Hawthorn
BANK®

1-877-442-9846

 Member FDIC HawthornBank.com NASDAQ: HWBK

Interstate Testing Services

Specializing in highway construction materials testing using cutting edge equipment and DOT certified technicians

Many other specialized testing capabilities and on site testing services.

- Asphalt Mixture Testing and Design
- Asphalt Binders
- Concrete Testing
- Aggregates
- On-Site Testing Services

AMRL, AASHTO R-18 accredited

Office Phone: 314-994-0641 | Fax: 314-994-0687
Email: alaplante@interstatetesting.com

ADVERTISER'S INDEX

Bomag Fayat Group & CMW Equipment.....	16	Mississippi Lime	7
Coastal Energy Corporation	7	Missouri Petroleum.....	2
CMW Equipment	13	Murphy Tractor & Equipment Co.....	2
Ergon Asphalt & Emulsions, Inc.	15	Premier Testing Laboratories, LLC	12
Delta Companies, Inc.	11	Roland Machinery Co.....	10
Fabick CAT	11	Sealmaster	13
Foley Equipment.....	12	Ultrapave	2
Hawthorn Bank.....	8	Vance Bros Inc.	9
Interstate Testing Services	8		

PRESERVING PAVEMENTS

SINCE 1923

MICRO SURFACING SLURRY SEAL CHIP SEAL FOG SEALING CRACK SEALING

Emulsions Polymer-Modified Asphalts Cutbacks

Specializing in work for Cities, Counties and State DOT's

All Emulsified Asphalt based treatments installed for the preservation research at NCAT/MNROADS were completed by Vance Brothers, Inc. crews.



1923-2023

vancebrothers.com



MAPA
MISSOURI ASPHALT PAVEMENT ASSOCIATION

Summer Meeting & Social

Chateau on the Lake - Branson, MO
July 26-28, 2023

A great opportunity to build relationships with other MAPA Members!

Register Now!

or at www.moasphalt.org/events

CALENDAR OF EVENTS

MAPA Summer Social & Meeting
July 26 – 28, 2023
Chateau on the Lake
Branson, MO

MAPA/MoDOT Quarterly Meeting
August 1, 2023

MAPA Quarterly Municipal Meeting
September 5, 2023
City of Olivette, MO

MAPA-REF Golf Outing
September 20, 2023
Tanglewood Golf Course
Fulton, MO

Emerging Leaders Joint Meeting with Arkansas
October 8 & 9, 2023

MAPA Tech Committee Meeting
October 24, 2023

ROLAND MACHINERY CO.
www.rolandmachinery.com

Missouri locations

Bridgeton, MO
4670 Crossroads Industrial Dr
Bridgeton, MO 63044
Phone: 314-291-1330

Cape Girardeau, MO
3364 Percy Drive
Cape Girardeau, MO 63701
Phone: 573-334-5252

Columbia, MO
4110 I-70 Drive South East
Columbia, MO 65201
Phone: 573-814-0083

Palmyra, MO
701 Industrial Drive
Palmyra, MO 63461
Phone: 573-769-2056

JOIN THE ROLAND TEAM

KOMATSU **KOMATSU** Forestry Quality **WIRTGEN** **HAMM** **KLEEMANN** **VÖGELE**
FUCHS **TANA** **GRADALL** **DOOSAN** **LeeBoy** **Rosco** **Epiroc**

The 2023 MAPA Membership Directory was mailed in April. MAPA members be on the lookout for your copy!

2023 MEMBERSHIP DIRECTORY

181 Jefferson Street | Jefferson City, MO 65101 | P: 573-644-6071 | F: 573-644-6114 | mapa.org



SUPPORT YOU TRUST

Tackle any challenge with Fabick Cat.



LET'S DO THE WORK.™ 800.845.9188 | fabickcat.com

© 2022 Caterpillar. All Rights Reserved. CAT, CATERPILLAR, LET'S DO THE WORK, their respective logos, "Caterpillar Corporate Yellow", the "Power Edge" and Cat "Modern Hex" trade dress as well as corporate and product identity used herein, are trademarks of Caterpillar and may not be used without permission.





Asphalt Mixture

- Superpave Volumetric Mix Design
- Marshall Mix Design
- Stone Mastic Asphalt Design
- Recycle Materials (RAP, RAS) Analysis
- Ultra-Thin Bonded Wearing Course Design
- Hamburg Loaded Wheel Test
- Asphalt Pavement Analyzer
- Moisture Damage Susceptibility Testing
- Profilograph Services
- Field and Engineering Service

Office Phone: 573-406-1383

Fax: 573-406-1398

Email: infotlabs@gmail.com

www.premiertestinglab.com

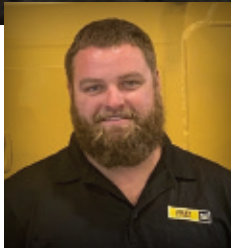
Asphalt Binder

- AASHTO M320 and MP19 PGB Verification and Classification Testing
- Asphalt Extraction Testing using Trichloroethylene
- Many other specialized testing capabilities



YOUR PAVING PARTNER

SALES • RENTAL • PARTS & SERVICE



Ryan Harman

RPHarman@FoleyEQ.com

Ph.: (785) 825-4661

Cell: (785) 303-0665

Tim Sirridge

TJSirridge@FoleyEQ.com

Ph.: (816) 753-5300

Cell: (816) 206-7275

Paving experts, Ryan Harman and Tim Sirridge, have experience in every aspect of the paving business including fleet management and maintenance, machine acquisition and life cycle management, work flows, resource allocation and profitable operations.

Give them a call for information and advice on the entire line of Cat® and Weiler paving machines.



FoleyEQ.com

© 2023 Caterpillar. All Rights Reserved. CAT, CATERPILLAR, LET'S DO THE WORK, their respective logos, "Caterpillar Corporate Yellow", the "Power Edge" and Cat "Modern Hex" trade dress as well as corporate and product identity used herein, are trademarks of Caterpillar and may not be used without permission. www.cat.com / www.caterpillar.com



PAVEMENT PRODUCTS
SALES • RENTALS • EQUIPMENT • TOOLS



CALL TODAY
 314-739-7325 (St. Louis)
 Sales@SealMasterStLouis.com
 13616 N.W. Industrial Circle, Bridgeton MO 63044
 www.sealmaster.net



Black & Gray
MASTIC



ROAD SEALERS



CRACK FILLING



TRAFFIC MARKING



THANK YOU

to all the advertisers
 for your support of
 this publication.



St. Louis, MO
 800-283-1336
 www.cmw-equip.com

Over 65 years of dependability supported by:



CARLSON
 PAVERS, SCREEDS



BOMAG MILLS/ROLLERS/SOIL STABILIZERS

MAULDIN DISTRIBUTORS/PAVERS

FALCON HOTBOXES



BOMAG/CEDARAPIDS PAVERS

VOLVO ROLLERS



STEWART AMOS SWEEPERS

DURAPATCHER SPRAY PATCHERS



CIMLINE CRACK SEALERS

GORMAN RUPP PUMPS

SAKAI ROLLERS

SUPERIOR BROOMS

ABG PAVERS

BLAW KNOX ROAD WIDENERS

Sales * Rental * Service * Parts

MAPA MEMBERS

The contractor's skill, experience and equipment relates directly to the ultimate quality of your asphalt paving project. Producing top quality work is the hallmark of MAPA's members. Whether you're building a highway, street, parking lot or driveway, look to a MAPA member. We'll be happy to show you the way.

Producer

Capital
Delta Companies, Inc./Delta Asphalt, Inc./
Apex Paving Company
Emery Sapp and Sons, Inc.
Herzog Contracting Corporation
Ideker, Inc.
Magruder Paving, LLC
N.B. West Contracting Company, Inc.
New Frontier Materials
Norris Asphalt Paving
Pace Construction Company
Simpson Materials Company
Superior Bowen
Willard Asphalt

Non-Producer Paver

Accurate Asphalt Paving Co., Inc.
Advanced Asphalt Paving
& Concrete, LLC
Available Asphalt & Contracting, LLC
BuildPro STL Construction, Inc.
C&B Paving Company
Diversified Contractors
E. Meier Contracting
Ford Asphalt Company
Gevers Paving Company, Inc.
Hotshot Asphalt, LLC
Leritz Busy Bee Paving
L. Keeley Construction
Pioneer Paving & Sealing
Seal-O-Matic Paving
Tramar Contracting, Inc.

Bituminous

Coastal Energy
Ergon Asphalt & Emulsions, Inc.
Flint Hills Resources
Heartland Asphalt Materials
Marathon Petroleum
Missouri Petroleum Products, Inc.
Peterson Oil Company
Phillips 66 Asphalt

Aggregate

Ash Grove Aggregates, Inc.
Con Agg Companies
Martin Marietta

County & City

Boone County
City of Clayton
City of Springfield Public Works
Cole County Public Works
Greene County Highway Department
Lincoln County Highway Department

Engineering/Consulting

Bartlett and West
CJW Transportation Consultants, LLC
Crossroad Pavement Consulting
Engineering Surveys & Services
Lochmueller Group
PaveTech Consulting, Inc.
SCI Engineering
State Technical College of Missouri

Associate

All State Materials Group
Arch Transit, LLC
Arkema Road Science
Asphalt Materials, Inc.
Asphalt Plus
Astec Industries
Barker, Phillips, & Jackson Inc.
Berry Tractor & Equipment
Blackledge Emulsions, Inc.
Bluegrass Testing Laboratory
BOMAG Americas
Buckley Powder
Buildex, Inc.
Central Power Systems & Services
CMW Equipment
Corrective Asphalt Materials, LLC
Crafco
CWMF Corporation
Dustrol, Inc.
Earthwave Technologies
EquipmentShare
FabickCAT
Foley Equipment
Gilson Company, Inc.
GS Grinding Services, LLC
G.W. Van Keppel Co.
Hall Brothers, Inc.
HaulHub Technologies
Hi-Tech Asphalt Solutions, Inc.
Home Builder's Association of Central
Missouri
IMA, Inc.

MAPA MEMBERS Continued

Ingevity
Innovative Roadway Solutions
Interstate Testing Services
Kraft Tank Corporation
Lockton Companies
Luby Equipment Services
Martin Equipment of Illinois
Maxam Equipment
MayeCreate Design
McMahon Berger, P.C.

Mississippi Lime Co.
Murphy Tractor & Equipment Co.
Ozark Laser & Shoring
Pacific GeoSource
Palmerton & Parrish Inc.
Pavon Corporation
PCC
Petro Logistics, LLC
Premier Testing Labs
Pure Asphalt Company

Purple Wave Auction
Roland Machinery Co.
Schaeffer Specialized
SealMaster
Spirit Asphalt, Inc.
Stansteel Corporation
Surface Tech
Tarmac International, Inc.

YOUR RESOURCE FOR EVERY ROAD.

We are proud to be your go-to roadway resource. Let one of our specialized team members assist you on your next project, and find the answers you're looking for today.

 **Ergon Asphalt
& Emulsions, Inc.**

ergonasphalt.com



P.O. Box 104855
Jefferson City, MO 65110
(573) 635-6071

PRSR T STD
U.S. Postage
PAID
Columbia, MO
Permit 286



THANKS FOR ALL YOU DO

**WE KNOW THAT YOU WORK LONG, HARD
DAYS AND BOMAG PAVERS WILL BE
THERE WITH YOU FOR EVERY MILE.**

We at BOMAG appreciate your dedication to your job, the way you take pride in your craft, and the long hours you put in to building our roads and keeping our country moving forward.

We take pride in our work too. Designed and built in the USA, our BOMAG CR-series pavers can withstand the real-world rigors of the toughest jobsites you face. We understand your everyday challenges, and our dedicated dealers and staff are here to stand by you during every mile.

To learn more about our paving products, visit www.bomag.com, or contact your local authorized dealer.



12890 Penridge Drive • Bridgeton, MO 63044 • 800-283-1336

*Serving Eastern Missouri,
Central and Southern Illinois*

