

MAPA ASPHALT NEWS

Missouri Asphalt Pavement Association

Summer 2022





BUILT TO MAKE YOU LOOK LIKE A GENIUS
Introducing the 700K SmartGrade™ Dozer.

With fully integrated Topcon® grade control and no external masts or cables, the 700K SmartGrade Dozer’s design is already pretty brainy. But what really gives our new SmartGrade dozer an “A” in grade control is simplicity. Set up is quick and easy. Operation is a breeze. And serviceability is amazingly simple. SmartGrade does the thinking. The job gets done more efficiently. And your business performance improves. Genius indeed. **Want to learn more about sharpening up your operation? Stop in or call today.**

MURPHY
TRACTOR & EQUIPMENT CO.

Kansas City, MO
888-306-3434

Springfield, MO
888-306-2656

murphytractor.com

ADVERTISER’S INDEX

Bomag Fayat Group & CMW Equipment.....	16	Mississippi Lime	4
Coastal Energy Corporation	13	Missouri Petroleum.....	13
CMW Equipment	9	Murphy Tractor & Equipment Co.	2
Ergon Asphalt & Emulsions, Inc.	15	Premier Testing Laboratories, LLC	12
Fabick CAT	11	Roland Machinery Co.	11
Foley Equipment.....	12	Sealmaster	6
Hawthorn Bank	13	Ultrapave	13
Interstate Testing Services	3	Vance Bros Inc.	4

MAPA ASPHALT NEWS

The Asphalt News is produced quarterly and distributed to association members and others interested in Missouri's asphalt industry.

Kyle Phillips
President

Brian Johanning
Vice President

Konn Wilson
Secretary-Treasurer

Casey Castrop

Tyson Collins

Andy Ernst

Bart Holmes

Steve Jackson, P.E.

Josh Kincaid

Matt Lindsay

Don Rosenbarger

Nick Stone

Vicki Woods

Dale Williams

Executive Director
Mobile: (573) 690-9676
Email: dalewilliams@moasphalt.org

Tammy Cavender

Office Manager
Office: (573) 635-6071
Email: tammy@moasphalt.org

Rick Biermann

Director of Bus. Development - St. Louis
Mobile: (314) 348-3785
Email: rick@moasphalt.org

MAPA Contact Information

1221 Jefferson Street
Jefferson City, MO 65110
Phone: (573) 635-6071
Fax: (573) 635-6134

4 The Way I See It

Missourians for Transportation Investment feels that we have a once in a lifetime opportunity to make a long-term meaningful impact on the Missouri transportation system by rebuilding I-70 with the state budget surplus.

5 Show-Me Women of Asphalt

Meet Anne Lamitola, another incredible woman working in the asphalt industry.

6 2022 MAPA Emerging Leaders Joint Meeting

The MAPA Emerging Leaders hosted AAPA Young Leaders for our 3rd Annual Joint Meeting in Branson in September.

7 23rd Annual MAPA REF Golf Outing & Scholarship Winners

Good times were had all around at the 23rd Annual MAPA Research and Education Fund (REF) golf tournament on September 21 at Tanglewood in Fulton, MO.

10 2023 Annual Conference

Check out the agenda for this year's upcoming conference.



Interstate Testing Services

Specializing in highway construction materials testing using cutting edge equipment and DOT certified technicians

Many other specialized testing capabilities and on site testing services.

- Asphalt Mixture Testing and Design
- Asphalt Binders
- Concrete Testing
- Aggregates
- On-Site Testing Services

Office Phone: 314-994-0641 | Fax: 314-994-0687
Email: alaplante@interstatetesting.com



The Way I See It

Rebuilding I-70 and the Long-term Impact on Missouri's Transportation System

The state of Missouri closed out the 2022 fiscal year with a General Revenue (GR) surplus of nearly \$4.9 billion. The surplus is due in part to a combination of inflation, higher wages and federal funds. Individual income tax revenue rose by 11.8% due to worker pay raises. State sales tax was up 13.1% as a result of inflation driving higher costs of consumer products. Missouri also benefited from extra money for expanding Medicaid eligibility and also the federal coronavirus relief funds. In September, Governor Mike Parson called a special session that resulted in the top state income tax rate being reduced from 5.2% to 4.95% which is expected to reduce future state revenue by \$700 million. Now that the state of Missouri has taken steps to reduce a budget surplus moving forward, the question remains how does the state spend the current surplus. As one can imagine, everybody and their brother will be standing with their hands out hoping to get a piece of the pie.

Missourians for Transportation Investment (MFTI), the broad coalition of over 60 member organizations that was influential in getting SB 262 passed in 2021, has put together the idea of utilizing the budget surplus to rebuild I-70 and also start the environmental impact and location studies for rebuilding I-44. The I-70 rebuild was selected as most of the environmental and location studies have been completed allowing design and construction of the project start almost immediately while the environmental impact and location studies for I-44 will take years to complete. The price to 6 lane I-70 between Kansas City and St. Louis is \$2.75 billion and a task that would take decades to complete with current transportation funding. MFTI feels that we have a once in a lifetime opportunity to make a long-term meaningful impact on the Missouri transportation system by rebuilding I-70 with the state budget surplus. A lot of people will say I don't live along I-70 so the project doesn't impact me.

However, rebuilding I-70 will free up future funding dedicated to maintenance of the corridor. Over the next 5 years, MoDOT has programmed \$236 million for I-70. This money, an average of almost \$50 million annually, could be freed up to spend in other areas of the state. Convincing the legislature to appropriate \$2.75 billion for a single project will not be an easy lift, but neither was passing a motor fuel tax in 2021. However, I am convinced that if the industry comes together like we did in 2021 with a strong grassroots effort we can be successful. For more information or to become a supporter of the effort go to fixMOinterstates.com.



Executive Director
Dale Williams



MISSISSIPPI[®]
LIME

Discovering what's possible with calcium

www.mlc.com (800-437-5463)



Bringing Integrity to the Surface.[®]
KANSAS CITY, MISSOURI 800-821-8549

On the job for over 90 years!



- POLYMER MODIFIED ASPHALTS
- EMULSIFIED ASPHALTS
- CUTBACK ASPHALTS
- MICROSURFACING
- CHIP AND SLURRY SEAL
- GEOTEXTILES/PAVING FABRIC INSTALLED
- PREMIUM COLD MIXES
- CRACKSEALANTS

[WWW.VANCEBROTHERS.COM](http://www.vancebrothers.com)




Show-Me Women of Asphalt

**Anne Lamitola, City of Ladue
Director of Public Works & Building Departments,
Interim Mayor’s Liaison**

Anne has been serving the city of Ladue as Director of Public works since 2012. Prior to her work for the City of Ladue she was the Director of Public Works for the City of Sunset Hills and a Civil Engineer for the City of St. Louis. Anne directly supervises and provides guidance to the Public Works Superintendent, Building Commissioner, City Planner, Storm Water Engineering Manager, Storm Water Project Engineer, and Administrative Assistant to the Public Works & Building Departments. Anne gives supervisory input to Mechanic crews, Laborer Crew Leaders, Laborers, the Property Maintenance & Housing Inspector, the Building Inspector, and the Building Department Coordinator. Anne has developed and managed the multi-year Road, Bridge, and Storm Water programs. Anne is responsible for preparing the Budget for General Fund for Public Works, Building Department, Road & Bridge Fund, Storm Water and Capital Fund for Public Works and Building Department Capital Needs. Anne has also always been involved in professional organizations such as APWA (American Public Works Association) and others.

Anne lives in Webster Groves, MO, with her husband and twin teenage daughters. When Anne isn’t hard at work, she likes to spend time with her family and attend her daughters’ sporting events which include soccer and volleyball games, and swim meets! She also enjoys hiking and traveling. When asked why she loves asphalt Anne said *“As a public sector engineer, asphalt is routinely the best application for the various projects that I have been involved with. With proper maintenance, it can last for decades, is affordable, and the placement is straight forward.”*

“Anne has been in the industry for over 20 years and has spent all those years in the public sector. Having known Anne as a sorority sister, a fellow civil engineering student, and a professional engineer it is my belief that she is an amazing role model for young men and women of all ages and positions aspiring to be engineers in the field of public works. Ms. Lamitola’s work ethic is above reproach, as is her professionalism. Her awards are many and she is always open and ready to support and/or share professional advice with anyone who may need it.” – Paula Hart



Anne with husband Stephen and daughters Ava & Sophia



Anne on City of Ladue Leaf Crew during COVID when staff shortages arised.



Each quarter Women of Asphalt - Missouri Branch will highlight the incredible women working in the asphalt industry.

You can learn by visiting moasphalt.org/members/committees/women-of-asphalt-missouri-branch

2022 MAPA Emerging Leaders Joint Meeting

The MAPA Emerging Leaders hosted AAPA Young Leaders for our 3rd Annual Joint Meeting in Branson in September. With the strongest attendance to date, our focus was to develop our leaders personally. The overall message included professional and workforce development from a wide variety of speakers both inside and outside of the asphalt industry. Many opportunities were available to socialize and develop relationships among fellow members of the industry. As young leaders, exposure to marketing the industry as well as political involvement and growing our workforce is paramount.

We learned from Dan Staebell with Cargill Asphalt on Solving Industry Hurdles Today, Jeff Glenn with Missourians for Transportation Initiative on Senate Bill 262 - The Evolution of a State Motor Fuel Tax Increase, John Regan with Keeley Companies on Keeping & Managing Employees, and Dustin James with Moments Leadership.

Unfortunately, Arkansas walked away with the “Battle Line Challenge” trophy this year but both sides won through building new relationships and developing personally. Planning has already begun for the 2023 Joint Meeting and we have a lot to be excited about!

Our upcoming events include our last professional development session with Dustin James at the MAPA Annual Meeting in January and a NEW professional development track at Black to Basics in February focusing on DISC profiles.

If there is a member of your organization that would find value in Emerging Leaders, we would love to have them. Please contact Stacy Brockmeier or Rick Beirmann for more details.



SealMaster
Pavement Products & Equipment

PAVEMENT PRODUCTS
SALES • RENTALS • EQUIPMENT • TOOLS

CALL TODAY
314-739-7325 (St. Louis)
Sales@SealMasterStLouis.com
13616 N.W. Industrial Circle, Bridgeton MO 63044
www.sealmaster.net

Black & Gray MASTIC

ROAD SEALERS **CRACK FILLING** **TRAFFIC MARKING**



23rd Annual MAPA REF Golf Outing & Scholarship Winners



Good times were had all around at the 23rd Annual MAPA Research and Education Fund (REF) golf tournament on September 21 at Tanglewood in Fulton, MO. Over 20 teams enjoyed the warm weather, beautiful course, networking, but most of all, supporting an amazing scholarship program.

The MAPA REF administers a scholarship program for students pursuing a degree in an infrastructure related field, which may include engineering, construction management, geotechnical, surveying, diesel mechanics, heavy equipment operation, and more.

MAPA members are strong supporters of the scholarship program and showed their generosity through sponsorships, participation, and donations at the golf outing this year. Thank you to the following sponsors.

Event Sponsor

- New Frontier Materials
- Pace Construction
- Ergon Asphalt and Emulsions
- Missouri Petroleum Products, Inc.
- Phillips 66
- Ingevity

Hole Sponsor

- CMW Equipment
- Con-Agg Companies
- Marathon Petroleum Company
- Astec Industries
- Pacific GeoSource
- Hawthorne Bank
- Emery Sapp & Sons, Inc.
- LeeBoy
- Schaeffer Manufacturing Company
- Capital Paving & Construction
- Murphy Tractor
- Roland Machinery
- New Frontier Materials
- Coastal Energy
- Tarmac International

Beverage Sponsor

- Arch Transit

Tent Sponsor

- Mayecreate

Prize Donations

- Ergon Asphalt and Emulsions
- Marathon Petroleum Company
- Heartland Asphalt Materials, Inc.
- Emery Sapp & Sons, Inc.
- West Contracting
- Ingevity
- LeeBoy
- CWMF Corporation
- Marathon Petroleum Company

A special thank you to the following State Technical College of Missouri students who volunteered their time to assist with the golf tournament. Each student is currently in his first year of the Civil Engineering Program.

*Colby Sims • Colin McHugh
Alex McHugh • Kaden Hampson
Gabe Lorenz • Dillon Staton
Tyler Davis*

Save the Date!

**MAPA REF Golf Outing 2023
will be September 20!**

Congratulations Our Golf Winners!



Championship 1st Place

Mike Bross, JD Bier, David Moseley, and Dan Doherty



Championship 2nd Place

Konn Wilson, Kevin Giese, Dave Viehmann and Rusty Durbin



Flight B 1st Place

Joshua Trolinger, Allen Akowicz, Joe Bardill and Jay Knorr



Flight B 2nd Place

Josh Tiffany, Greg Alderson, Andy Baker and Mickey Mantle



Flight C 1st Place

Chad Odle, Josh Kincaid, John Singleton, and Jared Adams



Flight C 2nd Place

Chis Scanlon, Justin Rogers, Ronnie Toth, and Roy Burns Jr.

- Longest Drive (Men): Jay Knorr
- Closet to the Pin #5: Missy Wilbers
- Closet to the Pin #16: Allen Akowicz
- Longest Drive (Women): Missy Wilbers
- Closet to the Pin #8: Konn Wilson
- Longest Putt #18: Chris West



Congratulations to Our Scholarship Winners!

In 2022, MAPA awarded 13 scholarships to students attending universities and technical colleges across Missouri. Congratulations to the following winners!

Zach Aufdenberg
Southeast Missouri State University
 Construction Management

Luan Barbosa
Missouri University of Science and Technology
 Civil Engineering

Eslam Deef-Allah
Missouri University of Science and Technology
 Civil Engineering

Kyle Deterding
Missouri State University
 Construction Management

Matthew Garnier
Missouri State University
 Construction Management

Ethan Harper
Missouri Western State University
 Construction Engineering Technology

Emily Howe
Missouri University of Science and Technology
 Civil & Architectural Engineering

Brenan Pool
Missouri University of Science and Technology
 Architectural/Civil Engineering

Hana Reagan
St. Charles Community College
 Engineering

Farshad Saberi Kerahroudi
Missouri University of Science and Technology
 Asphalt Pavement Engineering

Colby Sanders
Southwest Baptist University
 Business

Jesse Wallen
Missouri State University
 Construction Management

Cody Wieberg
State Technical College of Missouri
 Heavy Equipment Operation



St. Louis, MO
 800-283-1336
www.cmw-equip.com

Over 65 years of dependability supported by:



CARLSON
 PAVERS, SCREEDS



BOMAG MILLS/ROLLERS/SOIL STABILIZERS

MAULDIN DISTRIBUTORS/PAVERS

FALCON HOTBOXES



BOMAG/CEDARAPIDS PAVERS



VOLVO ROLLERS
STEWART AMOS SWEEPERS



DURAPATCHER SPRAY PATCHERS



CIMLINE CRACK SEALERS

GORMAN RUPP PUMPS

SAKAI ROLLERS

SUPERIOR BROOMS

ABG PAVERS

BLAW KNOX ROAD WIDENERS

Sales * Rental * Service * Parts



2023 Annual Conference AGENDA January 9-11, 2023

MONDAY | JANUARY 9

10:00 a.m.
Vendor Set Up Begins

3:00 p.m. to 6:00 p.m.
Registration Desk Open | Lobby Area

8:00 p.m. to 10:30 p.m.
Casino Night | Windsor II

TUESDAY | JANUARY 10

7:00 a.m. to 8:30 a.m.
Continental Breakfast | Expo

8:00 a.m. to 9:00 a.m.
Annual Business Meeting –
Members Only | Windsor I

9:15 a.m. to 9:30 a.m.
Welcome | Windsor III

9:30 a.m. to 10:30 a.m.
Keynote Speaker: Ken Schrader,
Professional Race Car Driver

10:30 a.m. to 11:30 a.m.
Accountability for Safety: How to (and
How Not To) Drive It Successfully -
Shae Birkey MS, CSP | Windsor III

11:30 a.m. to 12:00 p.m.
Leading with GRIT – *Jennifer
Bardot, Author* | Windsor III

12:00 p.m. to 2:00 p.m.
Equipment Exhibit, Lunch,
Paving Awards | Expo

2:00 p.m. to 2:30 p.m.
MoDOT Update
*Patrick McKenna, MoDOT Director
(invited)* | Windsor III

2:30 p.m. to 3:00 p.m.
Senator Justin Brown | Windsor III

3:00 p.m. to 3:30 p.m.
Break | Expo

3:30 p.m. to 4:30 p.m.
Attracting Tomorrow’s Talent
with Today’s Leaders
Steve Bench | Windsor III

4:30 p.m. to 5:00 p.m.
fixMOinterstates – *Jeff Glenn,
Missourians for Transportation
Investment (MFTI)* | Windsor III

5:00 p.m. to 6:30 p.m.
Reception & Equipment

6:30 p.m. to 11:00 p.m.
Dinner, Equipment Exhibit,
MAPA – REF Raffle and
MAPA – PAC Auction | Expo

WEDNESDAY | JANUARY 11

7:00 a.m. to 8:30 a.m.
Buffet Breakfast | Expo

8:30 a.m. to 9:15 a.m.
Ryan Lindsey, CRH | Windsor III

9:15 a.m. to 9:45 a.m.
MoDOT External - *TBA*
Civil Rights Update | Windsor III

9:45 a.m. to 10:15 a.m.
George Reddin, FMI | Windsor III

10:15 a.m. to 10:30 a.m.
Break | Lobby Area

10:45 a.m. to 11:00 a.m.
MU Update - *TBA*
Missouri S&T Update –
*Magdy Abdelrahman,
MAPA Endowed Professor* |
Windsor III

11:00 a.m. to 11:15 a.m.
MAPA Committee Updates |
Windsor III

11:15 a.m. to 11:45 p.m.
MoDOT Field Office Update –
Jason Blomberg, MoDOT Field Office |
Windsor III

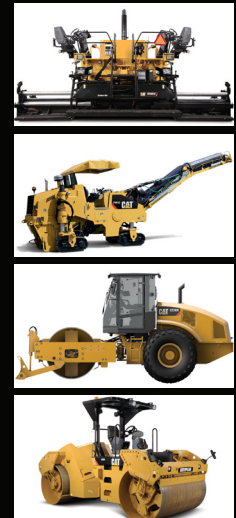
11:45 p.m.
Wrap Up & Prizes | Windsor III

Asphalt.

MISSOURI RIDES ON US

2024 Annual Conference
January 2024
Columbia, MO

PAVING ROADS ALL DAY EVERY DAY!



At Caterpillar Paving Products, all we think about is paving. Worldwide, no other manufacturer has more people dedicated to helping paving customers increase productivity, quality and profitability than Caterpillar.

Fabick provides the products and on-site support needed to improve your profitability. So you can bid with confidence, pave with efficiency and deliver on those non-negotiable performance specs.

Caterpillar is committed to your success. So is Fabick Cat. They are always there with financing, maintenance programs, parts and services needed to keep your equipment and crew on schedule. Or maybe ahead of it.

Toll Free: 1-800-845-9188
www.fabickcat.com

**NEW
USED
RENTAL
SERVICE
WE DO IT ALL**

"To Ever Serve Our Customers Better."



**ROLAND
MACHINERY CO.**

www.rolandmachinery.com



JOIN
THE

ROLAND TEAM

Missouri locations

Bridgeton, MO
4670 Crossroads Industrial Dr
Bridgeton, MO 63044
Phone: 314-291-1330

Cape Girardeau, MO
3364 Percy Drive
Cape Girardeau, MO 63701
Phone: 573-334-5252

Columbia, MO
4110 I-70 Drive South East
Columbia, MO 65201
Phone: 573-814-0083

Palmyra, MO
701 Industrial Drive
Palmyra, MO 63461
Phone: 573-769-2056





Asphalt Mixture

- Superpave Volumetric Mix Design
- Marshall Mix Design
- Stone Mastic Asphalt Design
- Recycle Materials (RAP, RAS) Analysis
- Ultra-Thin Bonded Wearing Course Design
- Hamburg Loaded Wheel Test
- Asphalt Pavement Analyzer
- Moisture Damage Susceptibility Testing
- Profilograph Services
- Field and Engineering Service

Office Phone: 573-406-1383

Fax: 573-406-1398

Email: infotlabs@gmail.com

www.premiertestinglab.com

Asphalt Binder

- AASHTO M320 and MP19 PGB Verification and Classification Testing
- Asphalt Extraction Testing using Trichloroethylene
- Many other specialized testing capabilities



Pete Martin
PRMartin@FoleyEQ.com
 O: (785) 825-4661
 C: (785) 488-7757

Randy Jordan
RDJordan@FoleyEQ.com
 O: (785) 266-5770
 C: (785) 256-1306

With over 55 years of paving experience between them, Randy Jordan and Pete Martin have experience in every aspect of the paving business including fleet management and maintenance, machine acquisition and life cycle management, work flows, resource allocation and profitable operations.

Give them a call for information and advice on the entire line of Cat® and Weiler paving machines.



FoleyEQ.com

© 2015 Foley Industries. All rights reserved. CAT, CATERPILLAR, their respective logos, "Caterpillar Yellow," the "Power Edge" trade dress as well as corporate and product identity used herein, are trademarks of Caterpillar and may not be used without permission. www.cat.com www.caterpillar.com



Preserving Pavements with Innovative Solutions since 1932

- Asphalt Emulsions & Cutbacks
- Micro Surfacing Slurry Seal
- Chip Seal
- Asphalt Underseal
- Tire Rubber Modified Asphalt Sealer
- High-performance Fog Seals
- Paving Interlayers
- Geotextiles & Geogrid
- Crack Sealants
- High-performance Cold patch



314-219-7305 | www.MissouriPetroleum.com

CALENDAR OF EVENTS

MAPA Tech Committee Meeting
November 22, 2022

MAPA St. Louis Quarterly Municipal Round Table Meeting
November 29, 2022

Rolla Asphalt Conference
December 6 & 7, 2022

MAPA Annual Conference
January 9 – 11, 2023
Holiday Inn Executive Center
Columbia, MO

MAPA Black to Basics Spring Training
February 22 & 23, 2023
Holiday Inn Executive Center
Columbia, MO

Emerging Leaders Clay Bird Shoot
April 26, 2023
Prairie Grove Shot Gun Sports
Columbia, MO

For Equipment Financing, Operating Lines of Credit and the ability to take managing your accounts to the next level with our Mobile Banking app.



Look to the Commercial Loan Experts at:



1-877-442-9846



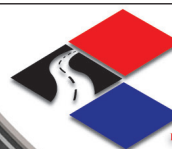
Member FDIC HawthornBank.com NASDAQ: HWBK

Hot Oil on Time



Coastal Energy Corporation
Paving the way since 1979

1 Coastal Drive
Willow Springs, MO 65793
417-469-2777
www.coastal-fmc.com



ULTRAPAVE
DIVISION OF TEXTILE RUBBER AND CHEMICAL COMPANY

SBR Polymers for Hot Mix
Antistrip Polymers for Asphalt (UP5000)

John Murphy
706-618-3625
1300 Tiarco Drive SW
Dalton, GA 30721

MAPA MEMBERS

The contractor's skill, experience and equipment relates directly to the ultimate quality of your asphalt paving project. Producing top quality work is the hallmark of MAPA's members. Whether you're building a highway, street, parking lot or driveway, look to a MAPA member. We'll be happy to show you the way.

Welcome New MAPA Members

- Paylocity
- Kraft Tank Corporation
- Ozark Laser & Shoring
- SCI Engineering
- HaulHub Technologies
- SealMaster
- PCC
- Hall Brothers
- Scodeller Construction
- Arch Transit LLC

Producer

Capital
Delta Companies, Inc./Delta Asphalt, Inc./
Apex Paving Company
Emery Sapp and Sons, Inc.
Herzog Contracting Corporation
Ideker, Inc.
Magruder Paving, LLC
N.B. West Contracting Company, Inc.
New Frontier Materials
Norris Asphalt Paving
Pace Construction Company
Simpson Materials Company
Superior Bowen
Willard Asphalt

Non-Producer Paver

Accurate Asphalt Paving Co., Inc.
Available Asphalt & Contracting, LLC
BuildPro STL Construction, Inc.
C&B Paving Company
Diversified Contractors
E. Meier Contracting
Ford Asphalt Company
Gevers Paving Company, Inc.
Hotshot Asphalt, LLC
Leritz Busy Bee Paving

L. Keeley Construction
L. Krupp Construction Company
Pioneer Paving & Sealing
Seal-O-Matic Paving
Tramar Contracting, Inc.

Bituminous

Coastal Energy
Ergon Asphalt & Emulsions, Inc.
Flint Hills Resources
Heartland Asphalt Materials
Marathon Petroleum
Missouri Petroleum Products, Inc.
Peterson Oil Company
Phillips 66 Asphalt

Aggregate

Ash Grove Aggregates, Inc.
Bussen Quarries
Con Agg Companies
Martin Marietta

County & City

Boone County
City of Clayton
City of Columbia Public Works
City of Lee's Summit
City of Savannah
City of Springfield Public Works
City of St. Louis Streets
City of Warrensburg Public Works
Cole County Public Works
Greene County
Highway Department
Lincoln County
Highway Department

Engineering/Consulting

Bartlett and West
Central Missouri
Professional Services, Inc.
CJW Transportation Consultants, LLC
Crossroad Pavement Consulting
Engineering Surveys & Services
GHD Services, Inc.
Lochmueller Group
PaveTech Consulting, Inc.
State Technical College of Missouri

MAPA MEMBERS Continued

Associate

All State Materials Group

Arkema Road Science

Asphalt Plus

Astec Industries

Barker, Phillips, & Jackson Inc.

Berry Tractor & Equipment

Blackledge Emulsions, Inc.

Bluegrass Testing Laboratory

BOMAG Americas

Buckley Powder

Buildex, Inc.

Central Power Systems & Services

Chapman Services, LLC

CMW Equipment

Corrective Asphalt Materials, LLC

Crafco

CWMF Corporation

Dustrol, Inc.

Earthwave Technologies

EquipmentShare

FabickCAT

Foley Equipment

Gilson Company, Inc.

GS Grinding Services, LLC

G.W. Van Keppel Co.

Hi-Tech Asphalt Solutions, Inc.

Home Builder's Association
of Central Missouri

IMA, Inc.

Ingevity

Interstate Testing Services

Lockton Companies

Luby Equipment Services

YOUR RESOURCE FOR EVERY ROAD.

We are proud to be your go-to roadway resource. Let one of our specialized team members assist you on your next project, and find the answers you're looking for today.

 **Ergon Asphalt
& Emulsions, Inc.**

ergonasphalt.com

THE LATEST IN MILLING TECHNOLOGY



The NEW powerful and economical BM 2200/65 mill from BOMAG meticulously balances the 630 hp engine power with optimal milling speeds to create an efficient and robust machine. This newly redesigned cold planer is the latest addition to the expanding BOMAG milling lineup. Its uniquely slim contour provides unparalleled visibility and better serviceability and maneuverability on the job site.



For more information on the BOMAG BM 2200/65 mill, contact CMW Equipment.

CMW
Equipment
www.cmw-equip.com

12890 Penridge Drive • Bridgeton, MO 63044 • 800-283-1336

Serving Eastern Missouri, Central and Southern Illinois

THINK FURTHER. PARTNERING FOR THE FUTURE.