

MAPA ASPHALT NEWS

Missouri Asphalt Pavement Association

Summer 2019



MAPA REF
Annual GOLF OUTING



BUILT TO MAKE YOU LOOK LIKE A GENIUS
Introducing the 700K SmartGrade™ Dozer.

With fully integrated Topcon® grade control and no external masts or cables, the 700K SmartGrade Dozer’s design is already pretty brainy. But what really gives our new SmartGrade dozer an “A” in grade control is simplicity. Set up is quick and easy. Operation is a breeze. And serviceability is amazingly simple. SmartGrade does the thinking. The job gets done more efficiently. And your business performance improves. Genius indeed. **Want to learn more about sharpening up your operation? Stop in or call today.**



Kansas City, MO
888-306-3434

Springfield, MO
888-306-2656

murphytractor.com

ADVERTISER'S INDEX

Coastal Energy Corporation	5	Mississippi Lime	5
CMW Equipment	10	Missouri Petroleum.....	13
Ergon Asphalt & Emulsions, Inc.	15	Murphy Tractor & Equipment Co.	2
Fabick CAT	9	Premier Testing Laboratories, LLC	11
Foley Equipment.....	10	Roadtec/Van Keppel.....	16
Hawthorn Bank.....	7	Roland Machinery Co.	11
Interstate Testing Services	7	Ultrapave	13
Keystone Engineering	11	Vance Bros Inc.	7

MAPA ASPHALT NEWS

The Asphalt News is produced quarterly and distributed to association members and others interested in Missouri's asphalt industry.

Andy Ernst
President

Eddie Welsh
Vice-President

Steve Jackson, P.E.
Secretary-Treasurer

Frank Champion

Keith Davenport

Brandon Finn

Brian Johanning

Andy LaPlante

Matt Lindsay

Kyle Phillips

Don Rosenbarger

Konn Wilson

Dale Williams

Executive Director

Mobile: (573) 690-9676

Email: dalewilliams@moasphalt.org

Brandon Atchison

Assistant Director

Mobile: (573) 301-3530

Email: brandon@moasphalt.org

Rick Biermann

Director of Bus. Development - St. Louis

Mobile: (314) 348-3785

Email: rick@moasphalt.org

Susan Brand

Executive Assistant

Email: susan@moasphalt.org

Mailing Address:

P.O. Box 104855

Jefferson City, MO 65110

Street Address:

1221 Jefferson

Jefferson City, MO 65109

Phone: (573) 635-6071

Fax: (573) 635-6134

4 The Way I See It

Transportation funding in Missouri will receive over \$500 million in new money.

5 MAPA Annual Conference

The 2020 Annual MAPA Conference is set for January 6-8 at the Holiday Inn Executive Center Columbia, MO.

6 Use of Recycled Asphalt Reaches New High

Results of the *Asphalt Pavement Industry Survey on Recycled Material and Warm-Mix Asphalt Usage*.

9 Summer Social Recap

From boat cruise to live auction, the summer social held at Margaritaville Lake Resort was a success.

12 MAPA-REF Golf Outing

Nearly 100 golfers participated in this year's outing at Tanglewood Golf Course on September 25.




Executive Director
Dale Williams

The Way I See It

More Wins for Transportation Funding in Missouri.

In July, MoDOT was awarded an \$81.2 Infrastructure for Rebuilding America (INFRA) grant to replace the I-70 Missouri River bridge at Rocheport and add climbing lanes on I-70 at Mineola Hill. This is the largest competitive grant MoDOT has ever received. This INFRA Grant triggers \$301 million in bonding, authorized by the Missouri Legislature during the 2019 session, to repair or replace 215 bridges across the state. This in turn will free up \$301 million for new projects to be added to the Statewide Transportation Improvement Program (STIP). In August, MoDOT was the recipient of a \$20.7 million federal grant through the U.S. Department of Transportation's Competitive Highway Bridge Program to replace 40 bridges in northern Missouri.


When you consider the \$100 million in General Revenue that was allocated by the Missouri Legislature during the 2019 session, the two grants received by MoDOT along with the bridge bonding program, transportation funding in Missouri will receive over \$500 million in new money. While these are not sustained new revenue streams, they will have a significant short-term impact on the transportation infrastructure in Missouri. We would not be where we are today without the leadership of Governor Mike Parson, Lt. Governor Mike Kehoe, the Missouri General Assembly, the Missouri Congressional Delegation and our partners at MoDOT. As we head into the 2020 legislative session in just a few short months, it is as important as ever to keep the conversation going and find a long-term solution to Missouri's transportation funding issues.



ASPHALT PERFORMS

2,200 +
students have been
awarded industry
scholarships, totaling

MORE THAN \$5.1M
granted since 1994.





Annual Conference

January 6-8, 2020



Upcoming MAPA Event

The 2020 Annual MAPA Conference is set for January 6-8 at the Holiday Inn Executive Center in Columbia, MO. Every year we look forward to this event as it signals the beginning of another great construction season. Before the season begins, it's best to get caught up on the outlook of the industry and check out the new innovative technologies available from exhibitors on the showroom floor. We pride ourselves on bringing you information on the most current industry news. Along with education, the conference gives you a fantastic opportunity to network with peers and meet other industry professionals.

In 2020 we welcome Afterburner, as the keynote speaker, presenting on the topic, Flawless Execution. Check out some of their presentations here: www.afterburner.com.

Hear from industry leading experts on topics such as:

- Drones in Construction
- Commercially Useful Function (CUF)
- LCCA
- Balanced Mix Design
- Women of Asphalt
- APA Update
- NAPA Update
- MU Update
- Missouri S&T Update
- MAPA Committee Updates
- Medical Marijuana in the Workplace
- MoDOT Field Office Update

Hot Oil on Time

Coastal Energy Corporation
Paving the way since 1979

1 Coastal Drive
Willow Springs, MO 65793
417-469-2777
www.coastal-fmc.com

MISSISSIPPI[®]
LIME

Discovering what's possible with calcium

www.mlc.com (800-437-5463)



Use of Recycled Asphalt Reaches New High

New Asphalt Pavements Contain, on Average, 21.1 Percent Material Reclaimed From Old Roads and Parking Lots

Asphalt pavements are the most consistently recycled material in the United States. Every day as part of maintenance and improvement projects, old asphalt pavement material is reclaimed from roads and parking lots and then put back to use in new pavements.

In fact, according to the latest industry survey by the National Asphalt Pavement Association (NAPA) in partnership with the Federal Highway Administration (FHWA) more than 100 million tons of reclaimed asphalt pavement (RAP) was collected for re-use in the United States during 2018, saving some 61.4 million cubic yards of landfill space. This survey has been conducted for each construction season since 2009 by NAPA, and it has consistently found that nearly 100 percent of RAP is put to beneficial uses, primarily new asphalt pavements.

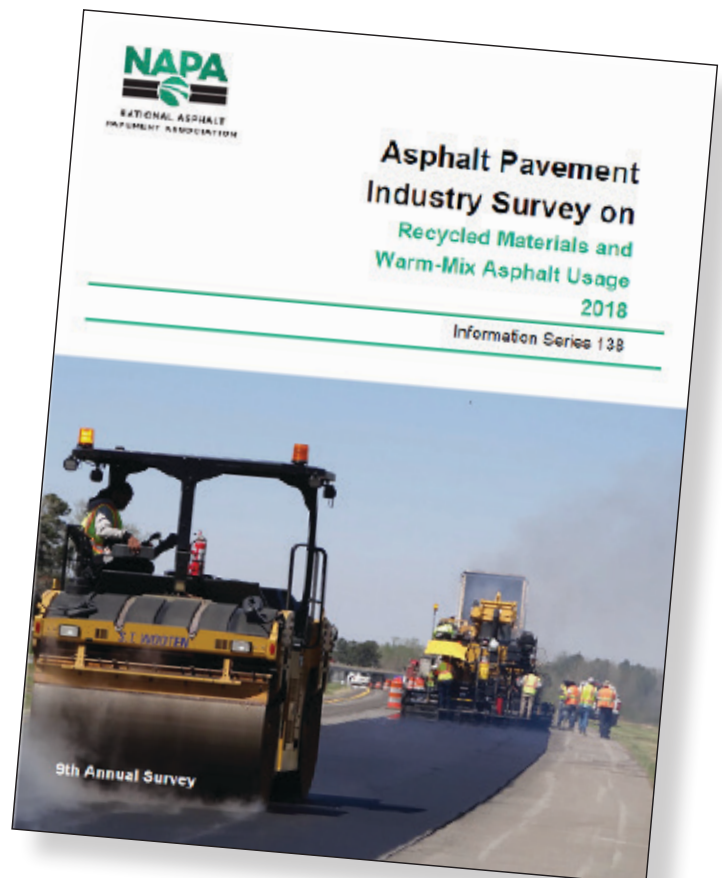
“Over the years, we’ve seen steady advancement in the amount of RAP being used across the country. This has been the result of concerted engineering efforts by industry and road owners to research and apply best practices to ensure we maintain or improve performance while increasing the use of recycled materials,” stated NAPA President & CEO Audrey Copeland, Ph.D., P.E. “As interest grows in incorporating other recycled materials into pavements, we must continue to gain a solid understanding of how new materials affect pavement performance before we move to widespread deployment.”

Nationally, the average amount of RAP in new asphalt pavements during 2018 was 21.1 percent, which is the highest level reported since the survey began in 2009. The survey found that 82.2 million tons of RAP, along with 1.05 million tons of recycled asphalt shingles (RAS) were used in 389.3 million tons of new asphalt pavement mixes in the United States during 2018.

An additional 8.8 million tons of RAP and RAS were used as aggregate, in cold-mix asphalt, and other road-building activities. The survey also found that at year-end 2018 about 111.7 million tons of RAP and RAS was stockpiled for future use across the country.

– MORE – Although national usage estimates were not calculated, respondents to the survey reported recycling some 1.8 million tons of recycled tire rubber, steel and blast furnace slags, cellulose fiber, and other reclaimed and waste materials into nearly 12.3 million tons of asphalt paving mixtures during 2018.

In total, more than 85 million tons of recycled materials — primarily RAP and RAS — were used in new asphalt pavement mixtures during the 2018 construction season, a 7.6 percent increase from the amount of recycled materials used in 2017. The use of RAP and RAS alone resulted in cost savings of more than \$2.9 billion compared to the use of virgin materials.



Use of Recycled Asphalt Reaches New High Continued

The asphalt pavement industry also continues to make significant use of energy-saving warm-mix asphalt (WMA) technologies. In 2018, 157.4 million tons of asphalt pavement mixture was produced using WMA technologies. More than half of this tonnage was produced at reduced temperatures, meaning less energy was required in manufacturing. The most common WMA technology used is plant-based foaming, which injects a small amount of water into the asphalt during production. A number of environmental, worker safety, and construction benefits have been realized through the adoption of WMA technologies.

“A decade ago, WMA technologies were a novel idea. In 2018, though, more than half the asphalt pavement mixture tonnage produced in 23 states used WMA technologies, and in six of those states, it was more than 75 percent of the tonnage,” stated John Harper, 2019 NAPA Chairman and Senior Vice President of Construction Partners Inc. in Dothan, Alabama. “While there remains room to grow their use, WMA technologies have become just another tool we can use to produce the best asphalt mixture to meet a given project or agency need.”

The survey was conducted in the first quarter of 2019. Results from 272 companies with 1,329 plants in 49 U.S. states, the District of Columbia, and two U.S. territories, along with data from state asphalt pavement associations for 33 states, were used to compile the report. A copy of the full survey report, including a state-by-state breakdown of data, is available at www.asphaltpavement.org/recycling.

The results of the asphalt pavement industry survey for the 2018 construction season show that asphalt mixture producers have a strong record of employing sustainable practices and continue to increase their use of recycled materials and warm-mix asphalt (WMA).



Bringing Integrity to the Surface.®

KANSAS CITY, MISSOURI 800-821-8549

On the job for over 90 years!



- POLYMER MODIFIED ASPHALTS
- EMULSIFIED ASPHALTS
- CUTBACK ASPHALTS
- MICROSURFACING
- CHIP AND SLURRY SEAL
- GEOTEXTILES/PAVING FABRIC INSTALLED
- PREMIUM COLD MIXES
- CRACKSEALANTS



WWW.VANCEBROTHERS.COM



For Equipment Financing, Operating Lines of Credit and the ability to take managing your accounts to the next level with our Mobile Banking app.



Look to the Commercial Loan Experts at:

Hawthorn

BANK

1-877-442-9846



Member FDIC HawthornBank.com NASDAQ: HWBK



Specializing in highway construction materials testing using cutting edge equipment and DOT certified technicians

Many other specialized testing capabilities and on site testing services.

- Asphalt Mixture Testing and Design
- Asphalt Binders
- Aggregates
- Concrete Testing
- On-Site Testing Services



Office Phone: 314-994-0641 | Fax: 314-994-0687
Email: alaplante@interstatetesting.com

THE BRIGHTEST IDEAS ARE IN ASPHALT



Visionary engineers and researchers are constantly innovating asphalt pavements to meet the needs of the future. They've created game-changing products like warm-mix asphalt and Thinlays for pavement preservation — and they're not done yet. The industry is already working on asphalt roads built to accommodate the safe use of driverless vehicles. This commitment to innovation is paving the way for even longer-lasting, higher-performing pavements.

WHEN IT COMES TO **INNOVATION** ASPHALT PERFORMS

   
SUSTAINABILITY INNOVATION VALUE FLEXIBILITY
LEARN MORE AT WWW.DRIVEASPHALT.ORG

Summer Social Recap

MAPA's Annual Summer Social was held at Margaritaville Lake Resort at Lake of the Ozarks this year. We welcomed many from around the state as we came together for a boat ride with Tropic Island Cruises around the lake and dinner at JB's Boathouse deck.

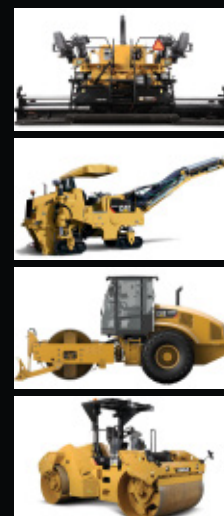
New this year, we held a live auction for the Emerging Leaders group. The auction was fun filled with abundant entertainment throughout the evening. We would like to thank those that donated and bid during the auction! The next day over twenty golfers tee'd off at the annual golf outing held at The Oaks.



Thank you to our sponsors of this event!

Astec • Capital Paving & Construction • Chapman Services, LLC • Coastal Energy Corporation
 Con Agg Companies • Ergon Asphalt & Emulsions • Foley Equipment • Fred Weber, Inc.
 Heartland Asphalt Materials • Heatec • Herzog Contracting Corp. • Hutchens Construction, LLC • Ingevity
 Journagan Construction • Missouri Petroleum • N.B. West Contracting • PACE Construction,
 Pacific GeoSource • Roadtec • Superior Bowen

PAVING ROADS ALL DAY EVERY DAY!



At Caterpillar Paving Products, all we think about is paving. Worldwide, no other manufacturer has more people dedicated to helping paving customers increase productivity, quality and profitability than Caterpillar.

Fabick provides the products and on-site support needed to improve your profitability. So you can bid with confidence, pave with efficiency and deliver on those non-negotiable performance specs.

Caterpillar is committed to your success. So is Fabick Cat. They are always there with financing, maintenance programs, parts and services needed to keep your equipment and crew on schedule. Or maybe ahead of it.

Toll Free: 1-800-845-9188
www.fabickcat.com

**NEW
USED
RENTAL
SERVICE
WE DO IT ALL**

"To Ever Serve Our Customers Better."





8668 Olive Blvd
St. Louis, MO 63132
800-283-1336
314-993-1336

www.cmw-equip.com

Over 60 years of dependability supported by:



**VOLVO/BLAW KNOX
PAVERS, ROAD WIDENERS**

ATLAS COPCO AIR COMPRESSORS

SUPERIOR BROOMS MAULDIN DISTRIBUTORS/PAVERS

GORMAN RUPP PUMPS CARLSON



STEWART AMOS SWEEPERS

VOLVO ROLLERS ABG PAVERS

Sales * Rental * Service * Parts

Are you on Twitter?
If so, give us a follow

MO Asphalt



YOUR PAVING PARTNER
SALES • RENTAL • PARTS & SERVICE



Pete Martin
PRMartin@FoleyEQ.com
O: (785) 825-4661
C: (785) 488-7757



Randy Jordan
RDJordan@FoleyEQ.com
O: (785) 266-5770
C: (785) 256-1306

With over 55 years of paving experience between them, Randy Jordan and Pete Martin have experience in every aspect of the paving business including fleet management and maintenance, machine acquisition and life cycle management, work flows, resource allocation and profitable operations.

Give them a call for information and advice on the entire line of Cat® and Weiler paving machines.



FoleyEQ.com

© 2015 Foley Industries All rights reserved. CAT, CATERPILLAR, their respective logos, "Caterpillar Yellow," the "Power Edge" trade dress as well as corporate and product identity used herein, are trademarks of Caterpillar and may not be used without permission. www.cat.com www.caterpillar.com

ROLAND
MACHINERY CO.
Komatsu Distributor

Need Equipment? Choose Roland

*Reliable Equipment • Responsive Service
24-Hour On-site Emergency Service Available*

**Call The Location
Nearest You!**

Bridgeton 314-291-1330	Columbia 573-814-0083
Cape Girardeau 573-334-5252	Palmyra 573-769-2056















15 locations throughout WI, IL, IN, MI, and MO

FLATLINER

Because Roads Should NOT Have a Pulse



IMPROVE RIDE QUALITY

Skid Steer Attachment for Smoothing Pavement, Bump Grinding, Pavement Markings and Coatings Removal

- Variable Cutting Widths: 3"-48"
- Precise Depth Control
- 100% Surface Coverage
- Profilograph and Bump Grinder in One




Keystone's Flat Tooth System

WWW.KEYSTONECUTTER.COM | 317.271.6192



Asphalt Mixture

- Superpave Volumetric Mix Design
- Marshall Mix Design
- Stone Mastic Asphalt Design
- Recycle Materials (RAP, RAS) Analysis
- Ultra-Thin Bonded Wearing Course Design
- Hamburg Loaded Wheel Test
- Asphalt Pavement Analyzer
- Moisture Damage Susceptibility Testing
- Profilograph Services
- Field and Engineering Service

Office Phone: 573-406-1383
 Fax: 573-406-1398
 Email: infoptlabs@gmail.com
www.premiertestinglab.com

Asphalt Binder

- AASHTO M320 and MP19 PGB Verification and Classification Testing
- Asphalt Extraction Testing using Trichloroethylene
- Many other specialized testing capabilities



MAPA-REF Golf Outing

The 20th Annual MAPA-REF Golf Tournament was held on September 25, at Tanglewood Golf Course in Fulton. We welcomed nearly 100 golfers this year at the tournament. The course was set and we tee'd off at 9:30 a.m. There were some great shots this year as many took on the closest to the pin and long drive challenges. We saw some amazing scores as well, the winner of the championship flight shooting a 55.

Thank You to Our Sponsors

Event Sponsor

- Missouri Petroleum
- Phillips 66
- Hutchens Construction, LLC
- Ergon
- Husch Blackwell Strategies
- Magruder Paving
- Marathon
- Roadtec
- Ingevity
- Herzog

Tent Sponsor

- MayeCreate

Beverage Cart Sponsor

- Purple Wave Auction

Hole Sponsor

- Schaeffer Specialized Lubricants
- American Highway Products
- Fred Weber, Inc.
- Pace Construction
- CMW Equipment

- Coastal Energy
- Spirit Asphalt
- Holiday Inn Executive Center
- Con Agg Companies
- Hawthorn Bank
- IMA Financial Group
- N.B. West Contracting
- Delta Companies Inc.
- Foley Equipment
- Krupp Construction
- Mississippi Lime
- Pavon Corporation
- Capital Paving and Construction
- Etnyre
- Bobby Medlin CPA Group
- Naught Naught Agency
- Tarmac International
- Corrective Asphalt Materials
- Mizzou Asphalt Pavement and Innovation Lab





Preserving Pavements with Innovative Solutions since 1932

Asphalt Emulsions & Cutbacks

Micro Surfacing Slurry Seal

Chip Seal

Asphalt Underseal

Tire Rubber Modified Asphalt Sealer

High-performance Fog Seals

Paving Interlayers

Geotextiles & Geogrid

Crack Sealants

High-performance Cold patch



314-219-7305 | www.MissouriPetroleum.com

CALENDAR OF EVENTS

Technical Committee Meeting

November 19, 2019

MAPA Office
Jefferson City, MO

Missouri S&T Asphalt Conference

December 3-4, 2019

Havener Center
(Campus of Missouri S&T)
Rolla, MO

Paving for Performance Built to Perform

December 3-4, 2019

Omni Austin Downtown
Austin, TX

30th Annual MAPA Conference

January 6-8, 2020

Holiday Inn Executive Center
Columbia, MO



SBR Polymers for Hot Mix
Antistrip Polymers for Asphalt (UP5000)

John Murphy
706-618-3625

1300 Tiarco Drive SW
Dalton, GA 30721

“Like” our Facebook page and follow us on Twitter. Social media outlets are a great way



for us to foster relationships with membership, industry partners, elected officials and the general public. Interact with us and let us know how we’re doing. We value your comments, likes, shares, retweets, and tags.

MAPA MEMBERS

The contractor's skill, experience and equipment relates directly to the ultimate quality of your asphalt paving project. Producing top quality work is the hallmark of MAPA's members. Whether you're building a highway, street, parking lot or driveway, look to a MAPA member. We'll be happy to show you the way.

Producer

Delta Asphalt/Apex Paving
Capital Paving and Construction
Emery Sapp and Sons, Inc.
Fred Weber, Inc.
Herzog Contracting Corporation
Hutchens Construction Company, LLC
Ideker, Inc.
Leo Journagan Construction Company
Magruder Paving, LLC
N.B. West Contracting Company
Norris Asphalt Paving
Pace Construction Company
Simpson Materials Company
Superior Bowen Asphalt Company
Willard Asphalt

Non-Producer Paver

Accurate Asphalt Paving Co., Inc.
Available Asphalt & Contracting
Busy Bee Paving, Inc.
Byrne & Jones Construction
C&B Paving
Diversified Contractors
E. Meier Contracting
Ford Asphalt Company
Gevers Paving
Leritz Contracting
L. Keeley Construction
L. Krupp Construction Company
Pioneer Paving
Seal-O-Matic Paving
TraMar Contracting

Bituminous

Coastal Energy
Ergon Asphalt & Emulsions
Flint Hills Resources
Heartland Asphalt Materials
Marathon Petroleum
Missouri Petroleum Products, Inc.
Peterson Oil
Phillips 66 Asphalt

Aggregate

Ash Grove Aggregates
Boone Quarries/Norris Quarries
Bussen Quarries
Martin Marietta

County & City

Boone County
City of Clayton
City of Columbia
City of Springfield Public Works
City of St. Louis Streets
City of Warrensburg Public Works
Cole County Public Works
Greene County
Highway Department
Lincoln County Public Works
State Technical College of Missouri

Engineering/Consulting

Barlett and West
Central Missouri
Professional Services
Engineering Surveys & Services
GHD Services, Inc.
Lochmueller Group

Associate

Allstate Materials Group
ASP Enterprises
Asphalt Plus
Asphalt Shingle Grinding Services
Astec Industries
Barker, Phillips, & Jackson Inc.
Berry Tractor & Equipment
Blacklidge Emulsions
Bluegrass Testing Laboratory
BOMAG Americas
Buckley Powder
Buildex, Inc.
CMW Equipment
Central Power Systems & Services
Chapman Services, LLC
Collaborative Aggregates LLC
Corrective Asphalt Materials, LLC
Crafco
Dustrol, Inc.
FabickCAT
Foley Equipment
Gilson Company, Inc.
GS Grinding Services, LLC.
G.W. Van Keppel Co.
Hansen's RAS, LLC

MAPA MEMBERS Continued

Heatec, Inc.
Hi-Tech Asphalt Solutions, Inc.
Home Builder's Association
of Central Missouri
IMA, Inc.
Ingevity
Interstate Testing Services
Lockton Companies
Luby Equipment Services
Martin Equipment of Illinois
Maxam Equipment
MayeCreate Design
Mississippi Lime Co.

Murphy Tractor & Equipment Co.
Pacific GeoSource
Palmerton & Parrish Inc.
Pavon Corp.
Petro Logistics, LLC
Premier Testing Labs
Purple Wave Auction
Road Science, Division of
ArrMaz Custom Chemicals
Roadtec, Inc.
Roland Machinery Co.
Schaeffer Specialized Lubricants
Spirit Asphalt Inc.

Stansteel
Tarmac International, Inc.
Tensor International Corporation
Ultrapave
Unique Paving
Victor L. Phillips Co.
Wright Asphalt Products Co.

YOUR RESOURCE FOR EVERY ROAD.

We are proud to be your go-to roadway resource. Let one of our specialized team members assist you on your next project, and find the answers you're looking for today.

 **Ergon Asphalt
& Emulsions, Inc.**

ergonasphalt.com

MAPA ASPHALT NEWS

P.O. Box 104855
Jefferson City, MO 65110
(573) 635-6071

PRSR7 STD
U.S. Postage
PAID
Columbia, MO
Permit 286



SALES • SERVICE • PARTS • RENTAL

WE ARE **YOUR** ASPHALT SPECIALISTS

Together Van Keppel & Roadtec bring you a
full line of asphalt paving equipment.

Mills, Pavers, MTVs and much more!



Contact us today at 913-281-4800
www.vankeppel.com